

Model:CLCT12

Apple MFi Licensed  
Accessory Product



#### A Descriptions and Functions:

The product is an indoor 4 port charger designed to charge 4 mobiles or 3 mobiles + 1 tablet simultaneously via AC adaptors.

#### B Intended Use:



The product is an indoor product as stated in section A. The symbol of the house indicates this and these regulations are not adhered to it could lead to serious injuries, damage to property or death.

#### C Notes on Safety:



**ATTENTION!** Only skilled electricians may assemble and disassemble the housing of the product. There is a risk of electric shock and short circuit!

- This product is not a toy and is not meant for children, because it contains small parts which can be swallowed and can injure when used inappropriately!

1

- Please install the system and devices attached to it in a way that persons cannot be injured, or objects not be damaged for example by dropping and stumbling.
- Please remove the packing materials, because children may cut themselves on them while playing. Furthermore, there is a risk of swallowing and inhalation of incidentals and insulating material.
- Avoid places with high temperatures, or humidity, or places which might come into contact with water.
- Do not install the product close to openings of air conditioners, or at places with an excessive amount of dust, smoke or vibrations.
- Place the product only on horizontal and flat surfaces to avoid falling.
- Do not modify and alter the product and any accessories! Make sure you also read the Chapter "Warranty and Liability".
- Do not use any damaged parts.
- Plug and unplug all cables / adaptors slowly and carefully.
- During transport, observe the details listed in the Chapter "Specifications", and implement measures suitable for transport, e.g. use the original package.
- For questions, defects, mechanical damages, malfunctions, and other functional problems which cannot be resolved by this manual, please contact your dealer for repair or replacement, as described in the Chapter "Warranty and Liability".
- Mind Chapter "Specifications".
- Please also observe the terms of use described in the Chapter "Intended Use".

#### D Package Content:

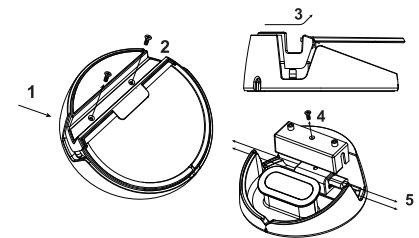
- 1 pc 100 ~ 240V / 50~60 Hz AC Adaptor
- 1 pc Power Cord
- 1 pc 4-Port Desktop Charger
- 1 pc Manual
- 4 pcs Charging Adaptor plugs

#### E Connecting and Operating:

- 1 Connect the included Power Cord to the AC Adaptor then to the 4-Port Desktop Charger

##### Replace cable:

2. Open the charger by unscrewing the screws inside the tablet slot.
3. Slide cover to right hand side, remove charger cover.
4. Open the cable cover by unscrewing the screw on the cover.
5. Replace cables.



2

#### F Care, Maintenance, Storage and Transport



**ATTENTION!** There is a risk of electric shocks and short circuit!

- The device is maintenance-free.
- Always disconnect the mains plug from mains at first!
- Use a dry linen cloth to clean your product, or use a slightly moist cloth for heavy stains. Look out for live cables of your device during cleaning! Do not use any cleaning supplies and avoid liquid entry to the device.
- Avoid the risk of stumbling during installing the mains Power Cord and adaptor plugs.
- Avoid places with high temperatures, humidity, or places which can become wet, also during care, maintenance, storage and transport.
- Mind the notes on safety also regarding care, maintenance, storage and transport.
- Use the original packaging as protection from dust and humidity for transporting.

#### G Specifications:

Model	CLCT12
Input Voltage	100~240V AC / 50~60 Hz
Output Voltage (AC Adaptor)	12V
Output Voltage (Charging Adaptors)	5V
Output Current	4 x 1.5 A
Output Ports	4

#### H Warranty and Liability:

- The producer grants a 12 months warranty to a new device and 6 months warranty on any consumable parts such as charging cables and batteries from the date of purchase.
- As the manufacturer has no influence on installation, warranty of the product only applies to the product.
- If any fault or damage is detected on your device, please contact your dealer and provide your sales slip or invoice as evidence of the

3

purchase, if necessary. Your dealer will repair the fault either on site or send the device to the manufacturer. You make the work of our technicians considerably easier, describing the possible faults in detail. If your dealer cannot be contacted, you can also contact us directly.

- The manufacturer is not liable for damages to persons or property caused by improper installation operation not described in this guide. This includes, among others, any alternation and modification of the product and its accessories.
- Any use other than described in this user manual is not permitted, and causes loss of warranty, loss of guarantee, and non-liability.
- We reserve our right for misprints and changes of the device, packing or user manual.

#### I Troubleshooting:

Problem	Help
The device does not charge	<ul style="list-style-type: none"><li>• When the device is charged completely, no charging is shown.</li><li>• Check all connections for tight fitting.</li><li>• Use only the fitting Charging Adaptor Plugs.</li></ul>
Failure of the Female USB function	Make Sure using a fitting and compatible USB charging cable.
Other problems	Consult your dealer.

#### J Note on Waste Disposal:



In according to the European WEEE directive, electrical and electronic equipment must not be disposed with consumers waste. The consumer is committed by law to reposit electrical and electronic devices to public collecting points or to the dealer at the end of the devices lifetime for free. Particulars are regulated in national right. The symbol on the product, in the manual or at the packaging alludes to these terms. With this kind of application of used devices you achieve an important share to environmental protection.

##### ATTENTION!

Please read the user manual completely and carefully. It is part of the product and includes important information for proper installation and use. Keep this guide to have it available, hen there are uncertainties, or the product will be passed on.

4