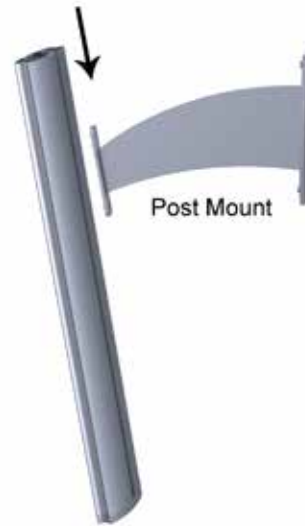


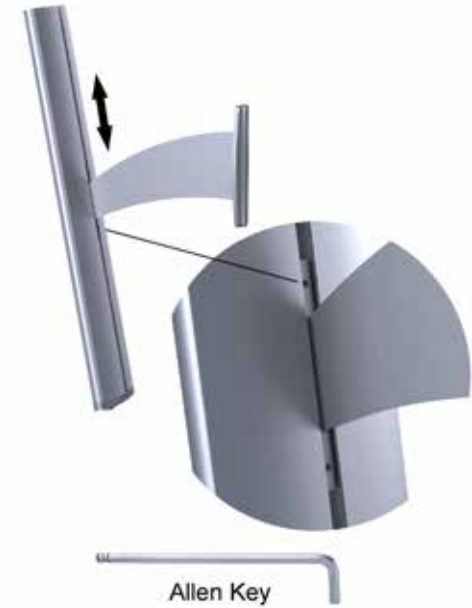
Assembly Instructions



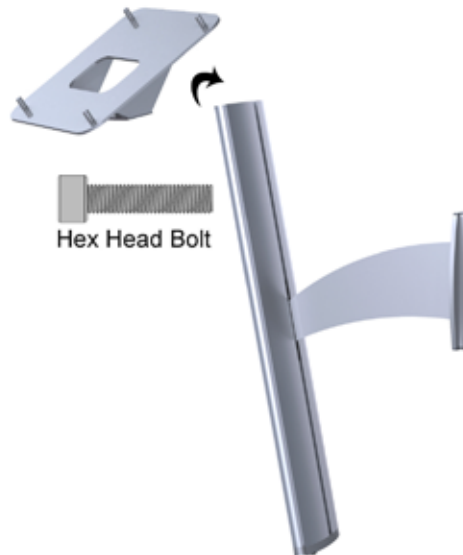
1. Slide the post over the post mount



2. Tighten the grub screws to fix the post at the desired height using the allen key provided



3. Secure the top bracket to the post with the bolts provided



4. Screw the holder to the wall. Use the plastic wall plugs when securing to concrete.



5. Secure the iPad enclosure to the holder in either Landscape or Portrait format using the 4x dome nuts supplied.

