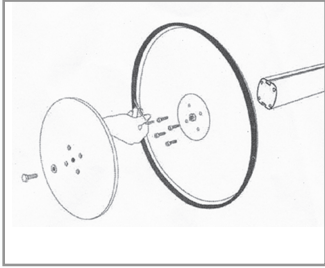
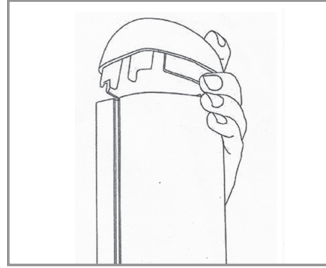


Sages iPad Stands - Instructions

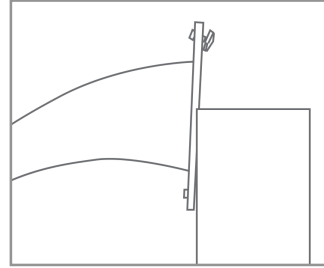
SKU: SGIPDSVA1, SGIPDBKA1, SGIPDSVA2, SGIPDBK2, SGIPDSVA1DS,
SGIPDBKA1DS, SGIPBSVA2DS, SGIPDBKA2DS



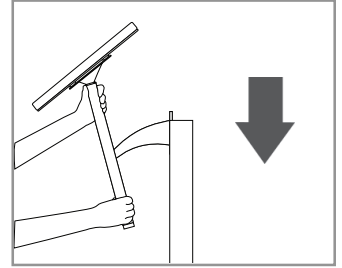
1. Connect the pole, base and weight as shown.



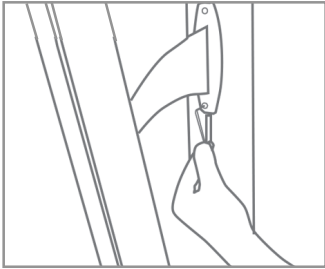
2. Remove the pole cap.



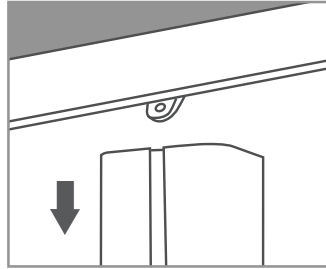
3. Assemble the iPad holder and loosely attach the included connector to the back of the plate to slide down the channel.



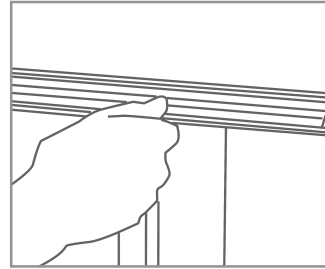
4. Slide the iPad holder down the pole into the desired position.



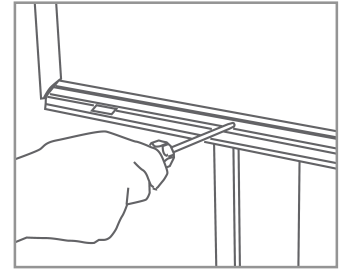
5. Using the allen key, tighten the screw to the pole.



6. To attach the poster holder, slide the 2 connector plates down the channel of the pole to the desired height.



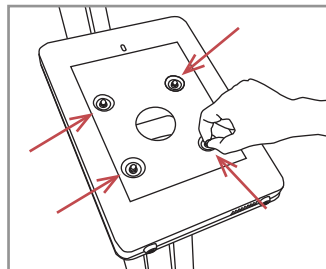
7. Unsnap the horizontal portions of the frame.



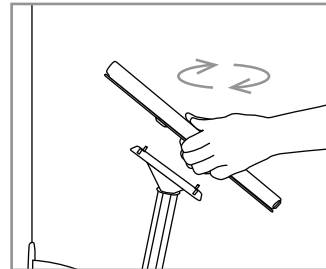
8. Tighten the screws at the top and bottom of the frame.



* iPad enclosure can be installed both portrait and landscape orientation



1. Before inserting the iPad, undo the 4 dome nuts on the inside of the iPad enclosure



2. Lifting the iPad holder from the bracket and change the orientation

