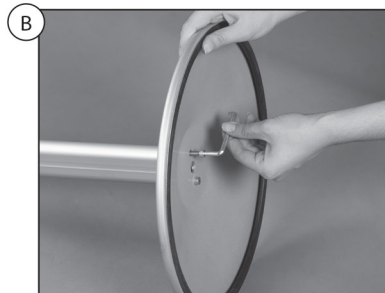


FREE STANDING PUZZLE TUMBLE BOX LOGO

•BASE



FORM HOLDER



Insert the tabs on the form holder into the post's channel.

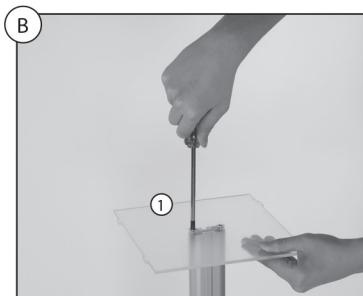


Slide the form holder to desired position and tighten screws to fix location.

•TUMBLE BOX

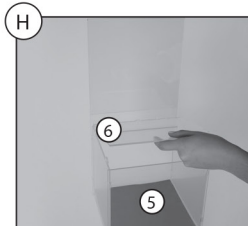
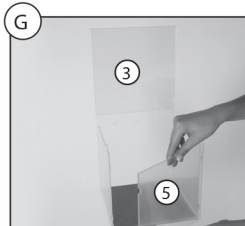
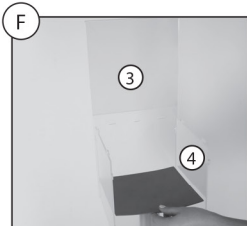
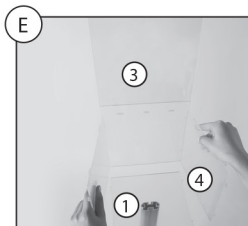
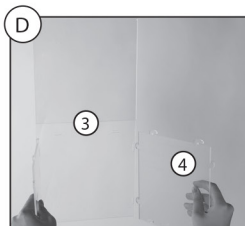
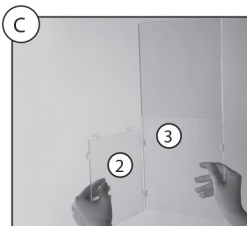


• Peel the film off each piece



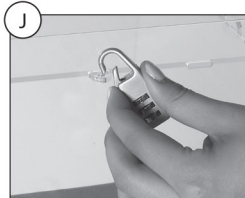
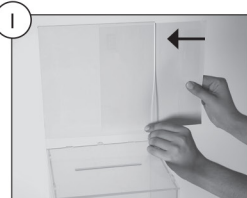
• Screw piece no:1 to pole.

• Follow the numbers indicated on the on each peice to make the box. Simply insert the pieces on the engraved holes.

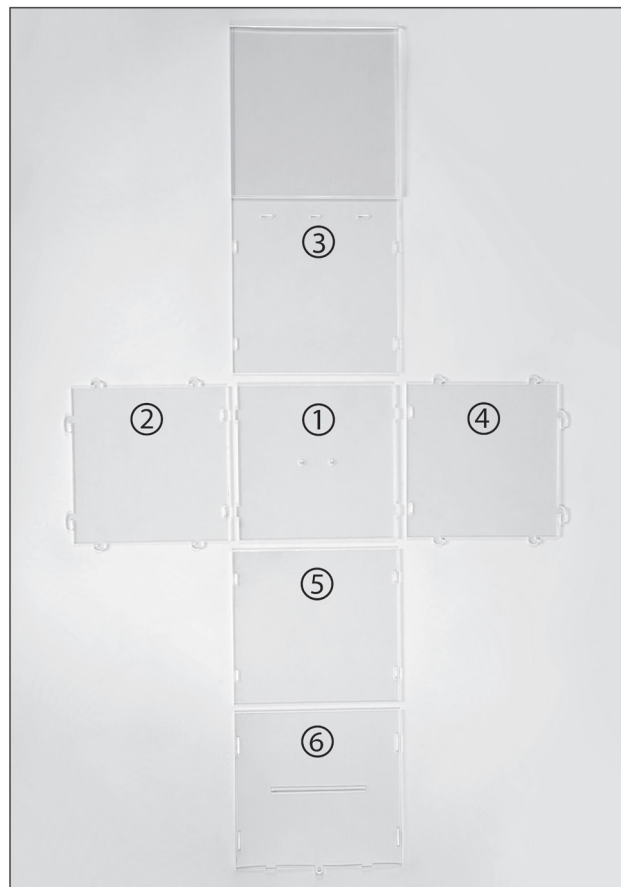


• Place fabric on the base

• Close the box with piece no:6.



• Insert the combination lock into hole at the back, to keep the box stable.



•LOCK

• You can change the combination by pushing the button shown in the picture by arrow.

