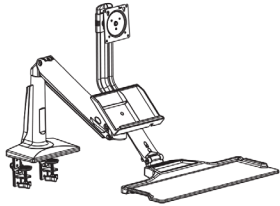


SKU: KSWWS27B35

## INSTRUCTIONS

















**Fits Most Displays Size:19"~27"**  
**Load Capacity: 4.4~19.8 lbs (2~9 kg)**  
**VESA: 75x75,100x100mm**

Severe personal injury and property damage can result from improper installation or assembly.  
Read the following warning carefully before beginning.

- Products must be installed by professional or installer.
- If you are not sure or understand the instructions or have any concerns or questions, please contact a qualified local installer.
- Do not install or assemble if the product or hardware is damaged or missing. If you require replacement parts, please contact your local distributor for assistance.
- This product fits most 19"–27" CD / monitor; maximum weight of LCD / monitor: 9kg / 19.8lbs.
- Installer-friendly, straight-forward.
- For safe installation, the desk you are mounting to must support minimum 3 times the weight of the total load (the weight of the monitor and all accessories weight).
- Do not use this product for other than the original designed.
- This product contain moving parts, please use with caution.
- When installing monitor, please do not damage electrical wiring or power source.
- Installation and routing of monitor cables on the monitor bracket must comply with electro-technical regulations.
- Importantly, mains- and data-cables must be secured against twisting and squeezing or shearing.
- The manufacturer will bear no responsibility to the desk of mounting, or incidental or consequential damages arising therefrom.
- The manufacturer disclaims any liability for the modifications, improper installation, or installation over the specified weight range. The manufacturer will not be liable for any damages arising out of the use of, or, liability to use, the product.
- This product is designed for indoor use only. Use of this product outdoor could lead to product failure and severe personal injury.
- ▲ This product contains a high pressure gas spring, fire and percussion are prohibited. Also it is strictly prohibited to dismantle without professional. Please return to the manufacturer or your product sales agencies if the product is abandoned. In order to ensure the performance of gas spring, full direction adjustment of the product arm is recommended several times per month.

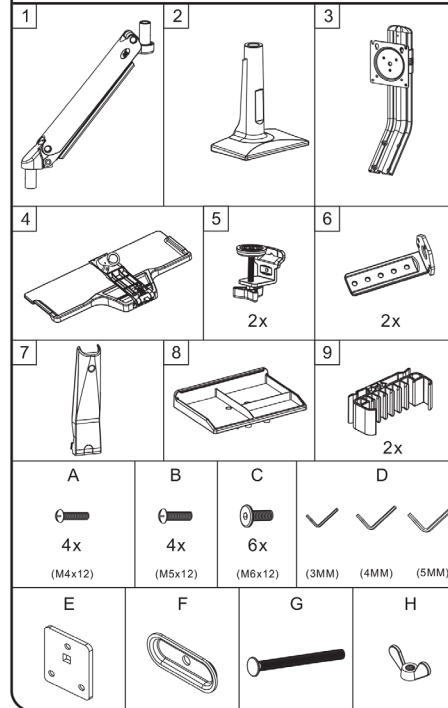
We reserve the right to modify or alter instructions. No modification or alteration without formal notice.

## Symbols

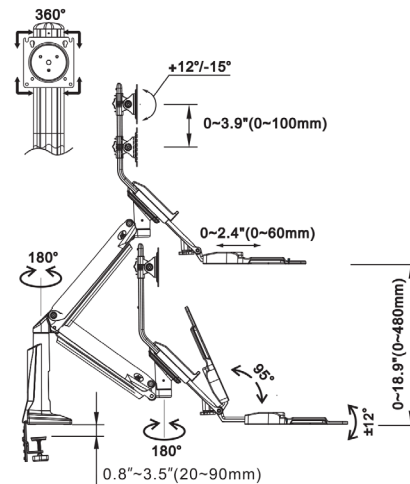
	Tightening Direction loosening Direction		+ : Torque increased - : Torque reduced
	Tightening Direction loosening Direction		+ : Torque increased - : Torque reduced
	Phillips Screwdriver		By Hand
	Open-End Wrench		Hex Wrench
	Adjustment		Pencil
<b>OPT</b>	Optional	<b>NOTE</b>	Reminder
	Warning		Hand Drill
	Remove		Star Wrench

**KSWS27B35**

## Part List



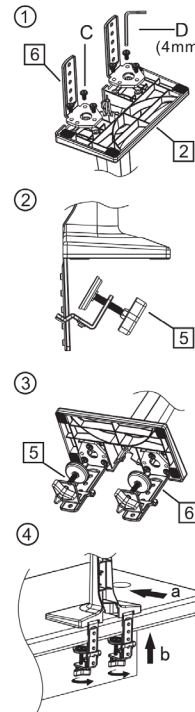
### A、 Full adjustment after installation



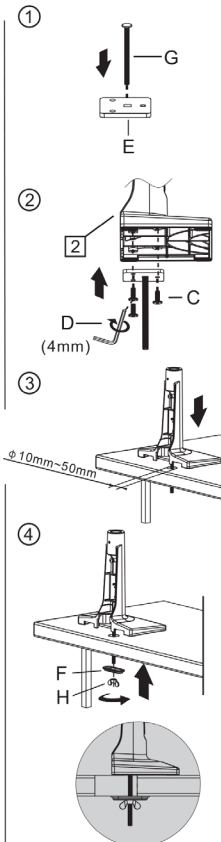
Load Capacity : 4.4~19.8lbs (2~9kg)

### B. Desk-mounted Installation

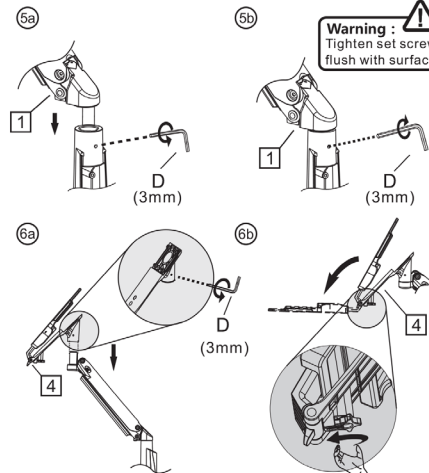
### Table edge installation



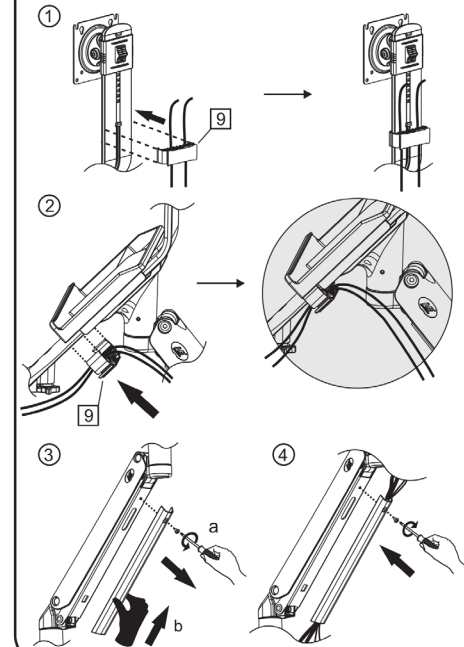
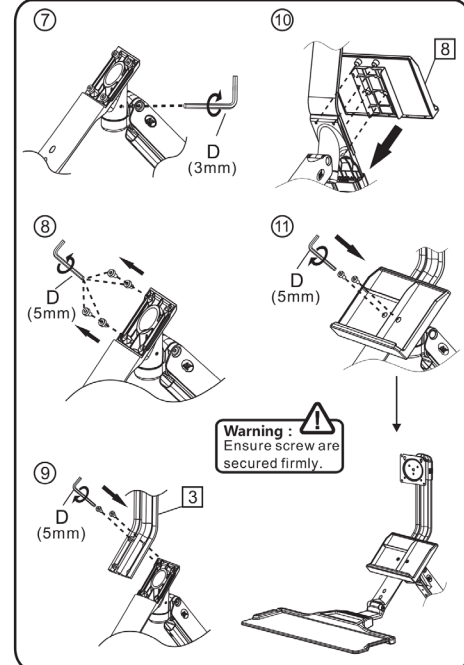
## Grommet installation

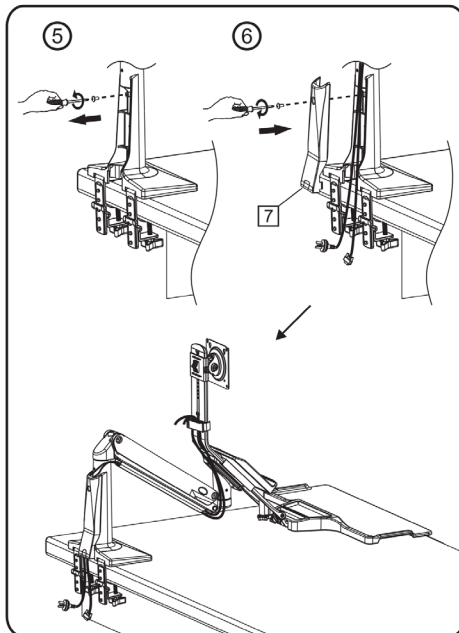


**Warning :**   
Tighten set screw  
flush with surface

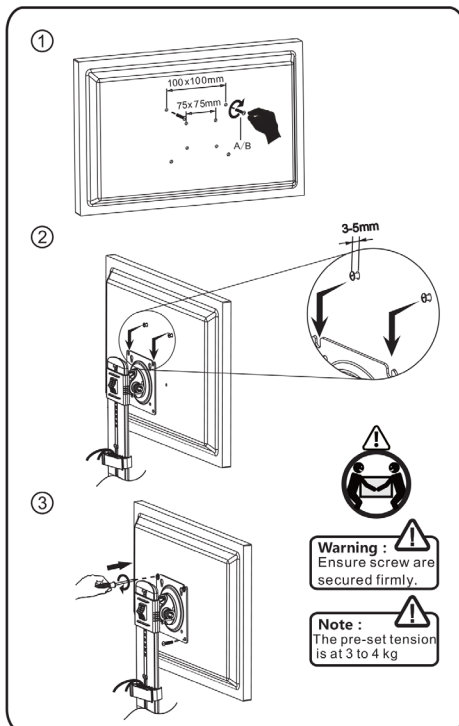


### C、Power and display cables management

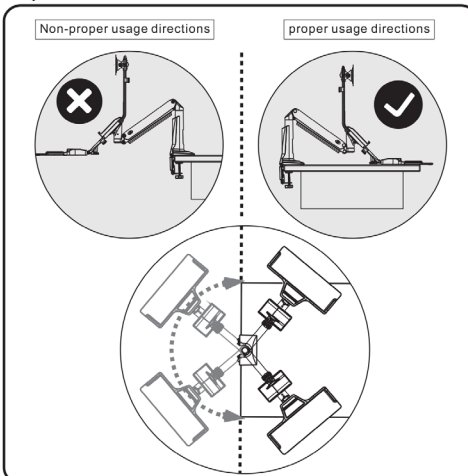




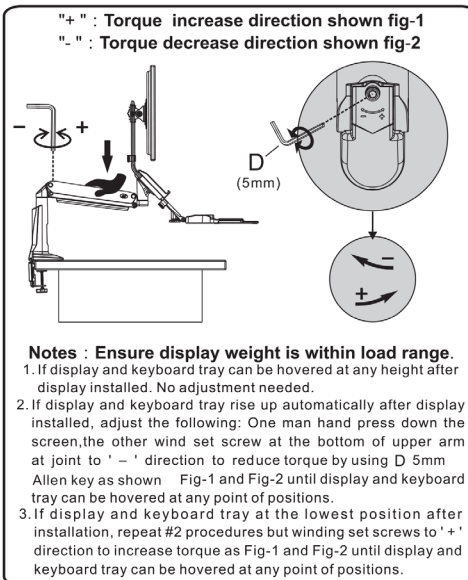
#### D. Display installation



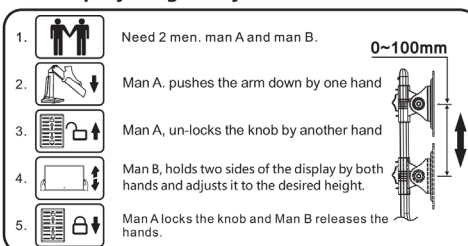
#### E. Rotation Restriction



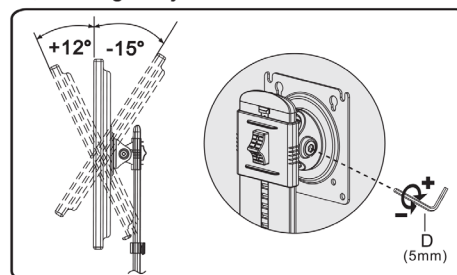
#### F. Torque adjustment



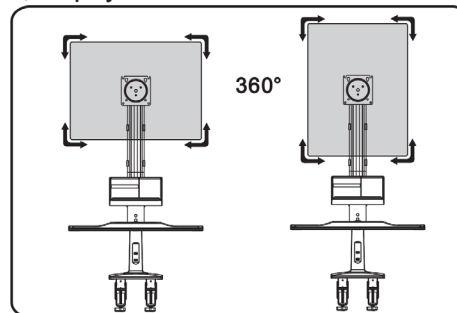
#### G. Display height adjustment



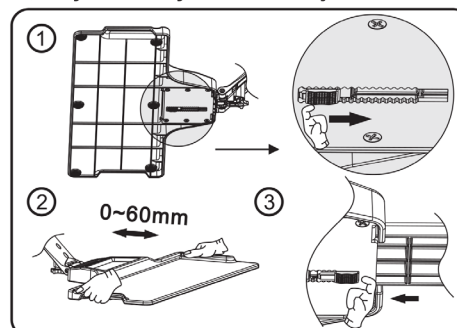
#### H. Tilt angle adjustment



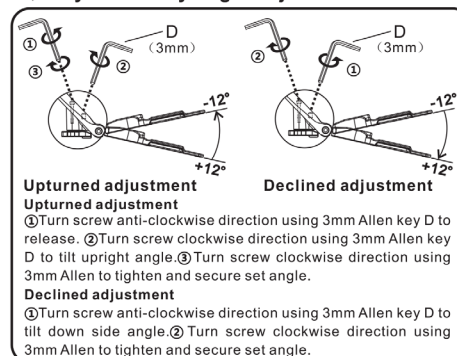
#### I. Display rotation



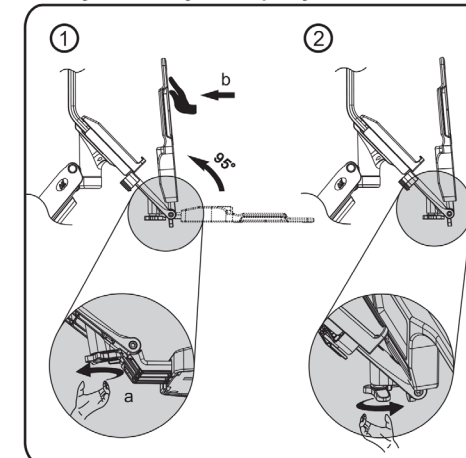
#### J. Keyboard tray extension adjustment



#### K. Keyboard tray angle adjustment



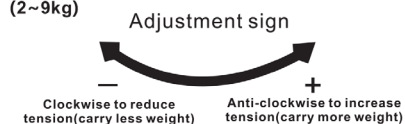
#### L. Keyboard tray fold-up adjustment



#### TENSION ADJUSTMENT AFTER INSTALLED



- Do not adjust tension without putting on display.
1. Ensure display has been put onto mount.
  2. Read your display packaging or manual to find out display net weight.
  3. Ensure display net weight between 4.4~19.8lbs (2~9kg)



#### Warning !



[www.slimlinewarehouse.com.au](http://www.slimlinewarehouse.com.au)