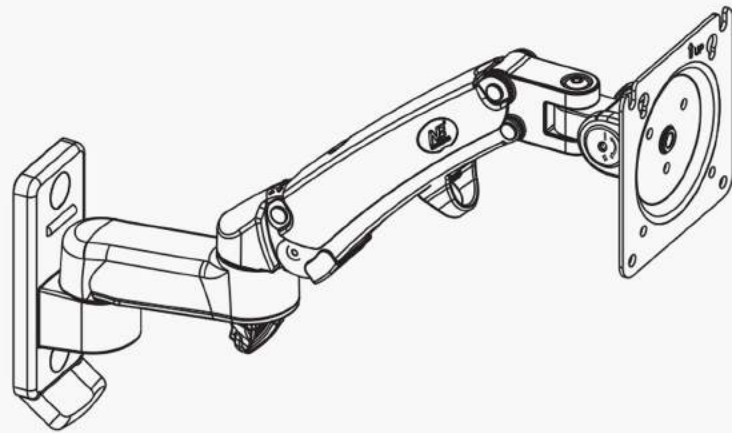


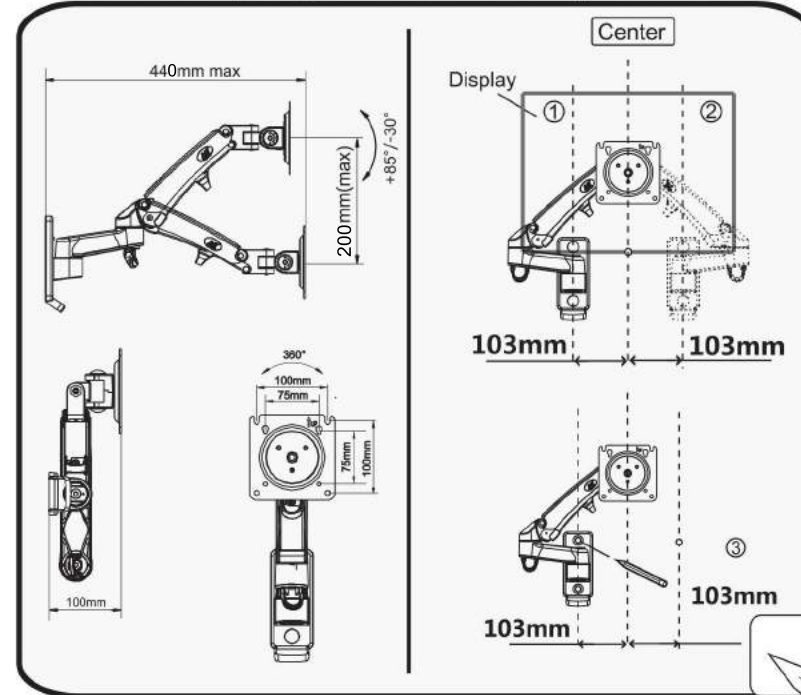
Gas-Strut Flexi Full Motion Wall Mount



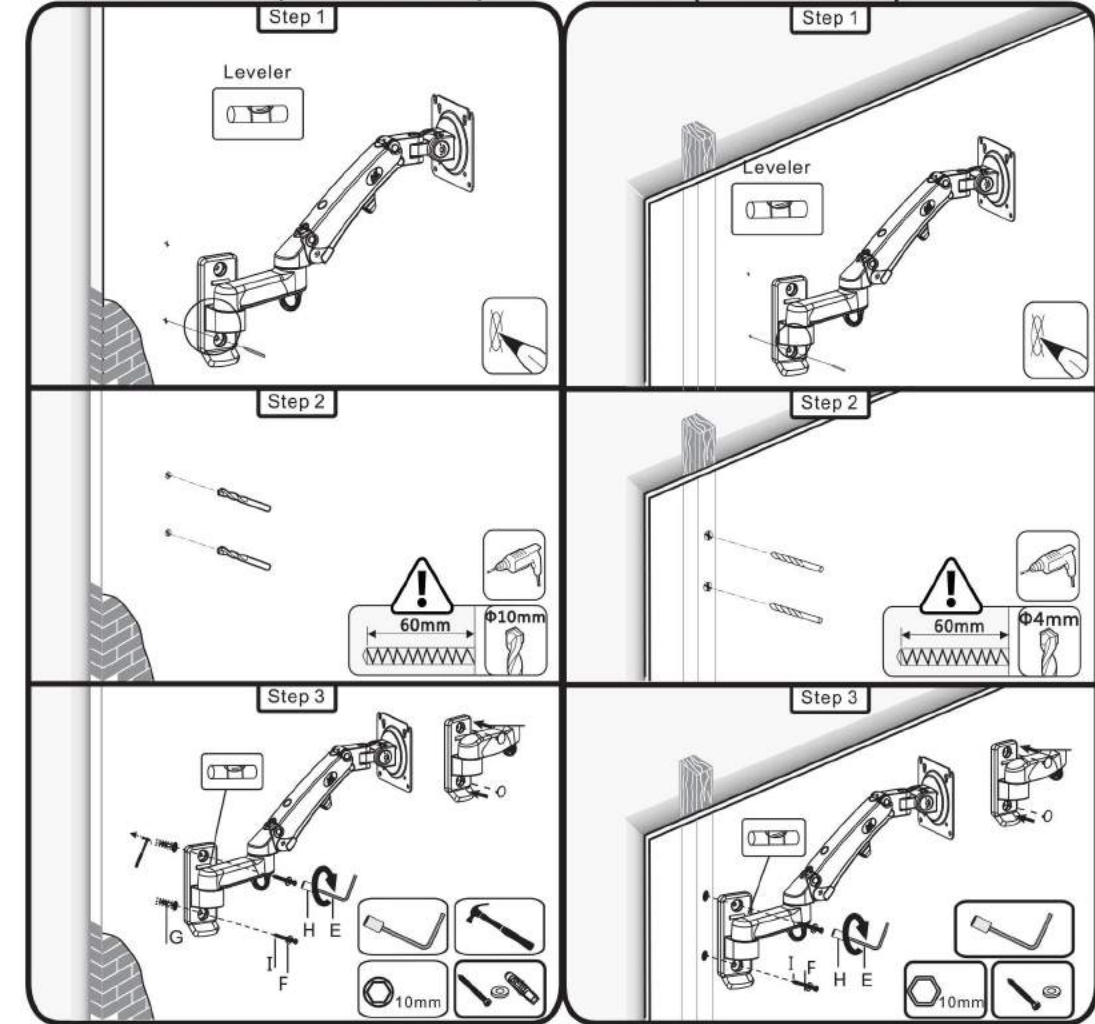
Fits most Display size : 24"- 35"
Max Load : 6.6-26.5 lbs (3-12 kg)
VESA : 75x75 - 100x100 mm

- | | |
|-------------------------|--------------------------------|
| A — (M4×25)-4pcs | F — (Φ16×Φ6.2×1.5)-3pcs |
| B — (M5×25)-4pcs | G — (10-50)-3pcs |
| C — (M6×25)-4pcs | H — (10-12)-1pcs |
| D — (M3)-1pcs | I — (M6×60)-3pcs |
| E — (M5)-1pcs | |

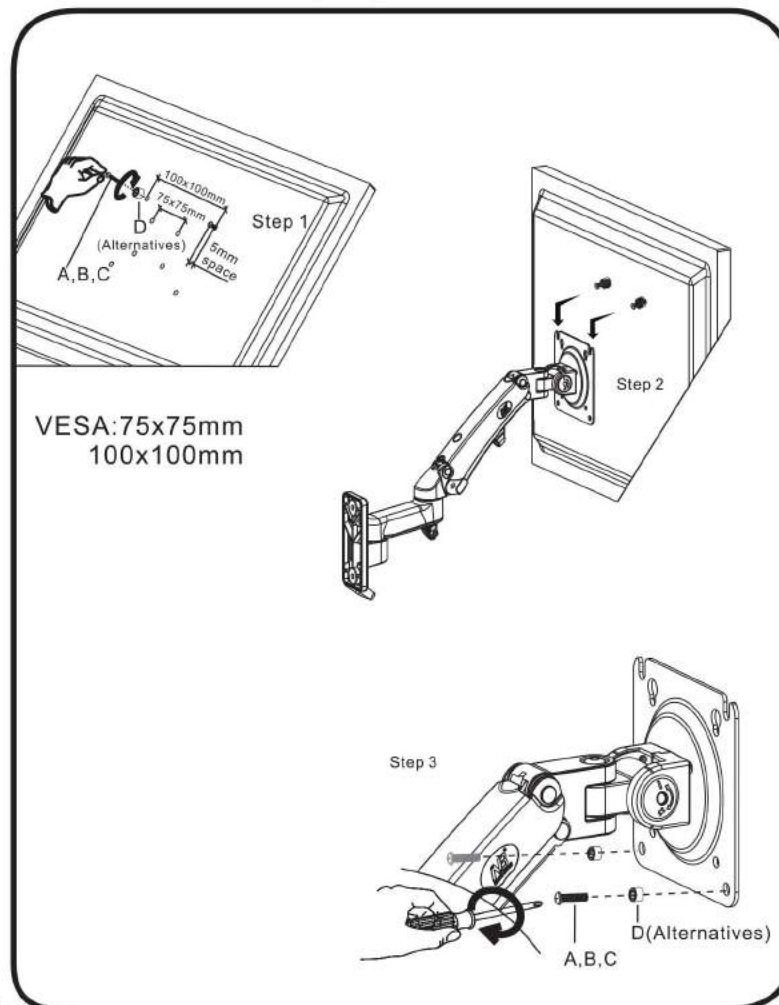
1.Positioning of gas-strut mount(Need 2 men).



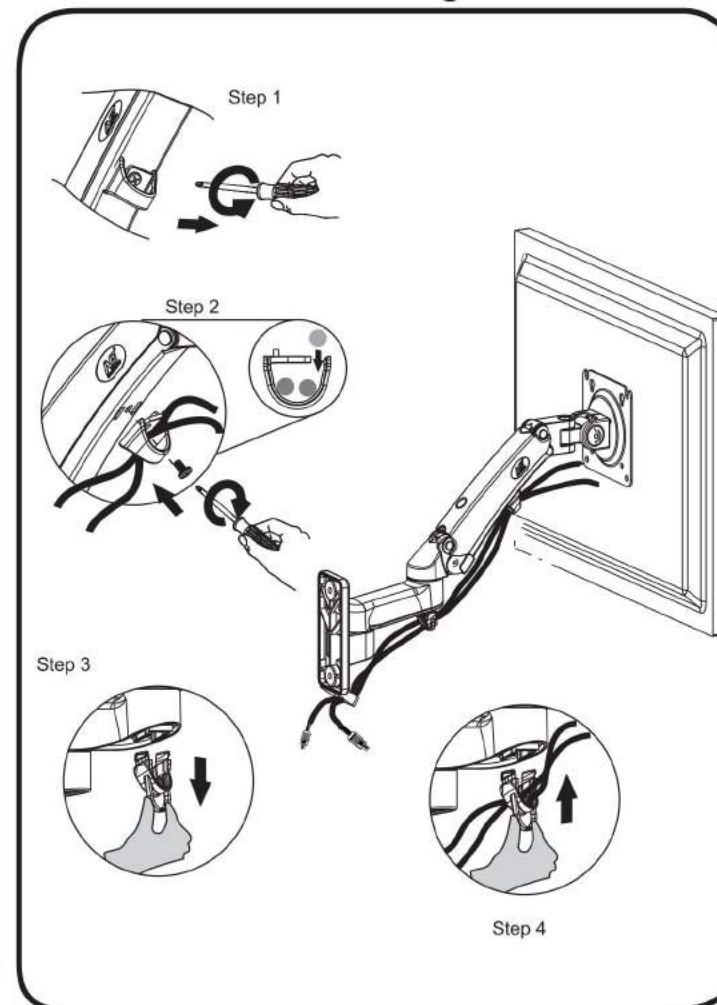
2a.Install mount onto masonry or concrete(Need 2 men). 2b.Install mount onto wood stud (Need 2 men).



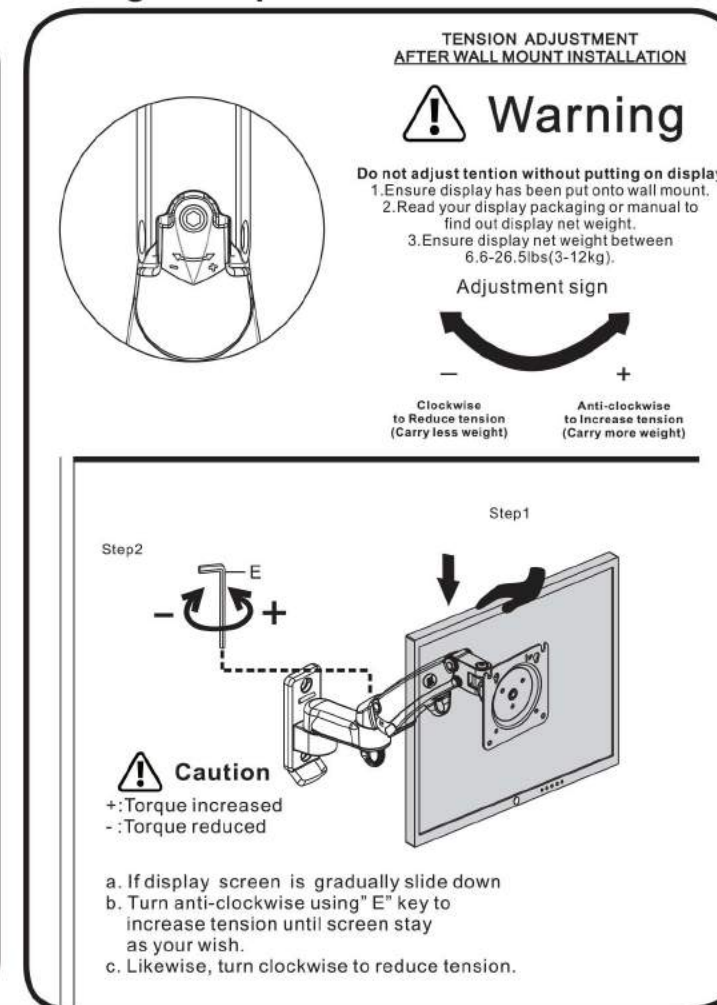
3.Interface to display installation



4.Cables and wires routing



Setting static position



Setting tilt angles, swivel positions and rotation

