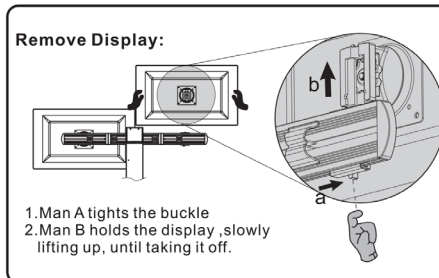
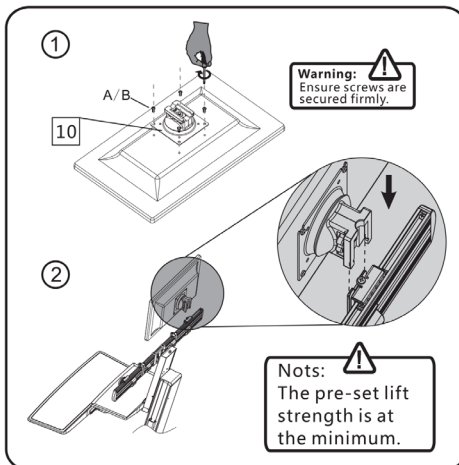
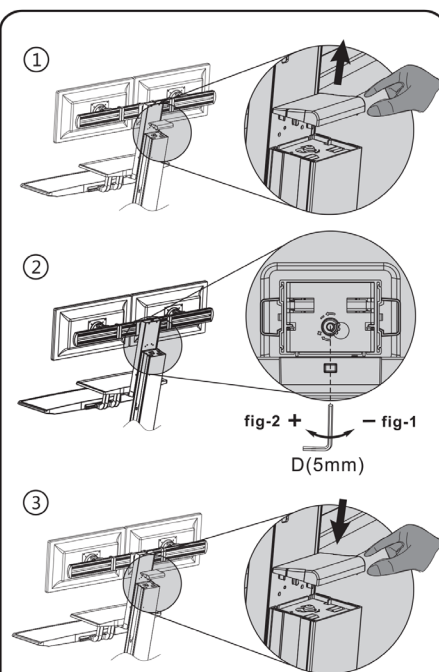


E. Displays Installation(2men required)



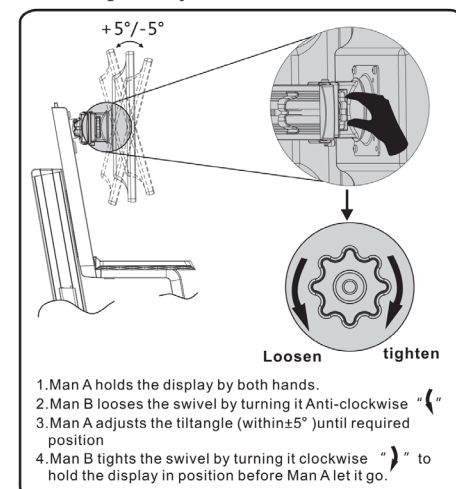
F. Lift strength adjustment Direction "+" increase. Direction "-" decrease



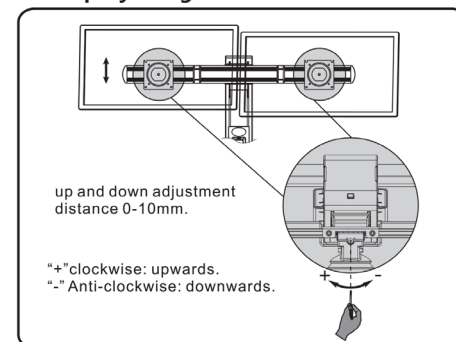
⚠ Ensure display is installed and load capacity within 2.-11kg/4.4-24.2lbs

- A. If work surface with equipment can be hovered at any height along the slide , no adjustment needed.
- B.If work surface with equipment can not be stopped at any height along the slide . then grasped and pull open cover located on top of the slider (fig#1)
- B1.If sliding up freely , then use 5mm allen key to wind set screw '-' anti - clockwise to reduce lifting force until it staysat any point (fig#2). attach cover(fig#3).
- B2.If sliding down freely , then use 5mm allen key to wind clockwise to increase lifting force until it stays at any point (fig#2) attach cover (fig #3).

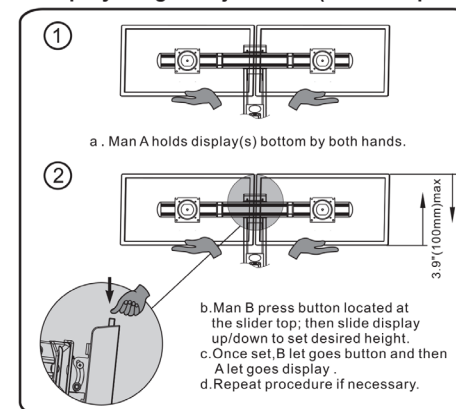
G.Tilt angles adjustment



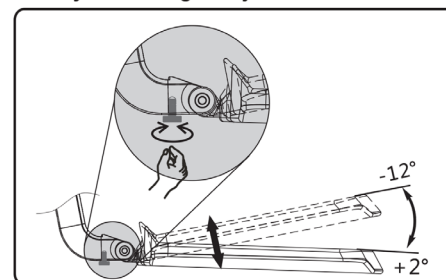
H. Displays Alignment



I.Display Height Adjustment(2men required)



J.Keyboard angle adjustment



Lift strength After mount installed



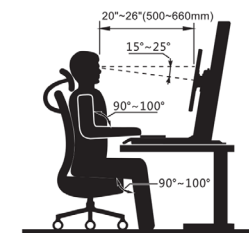
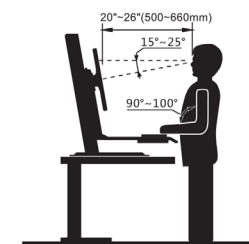
Warning

1. Ensured displayed has been installed
2. Ensured display net weight 4.4 - 24.2 lbs
3. Ensured all screws are secured firmly

Adjustment sign

+ Increase strength direction

- Decrease strength direction



www.slimlinewarehouse.com.au