

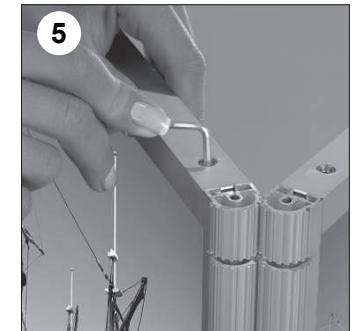
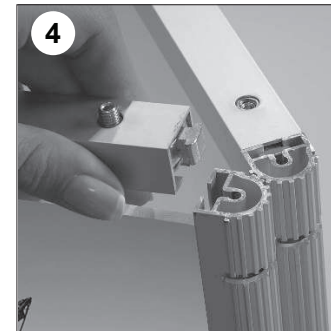
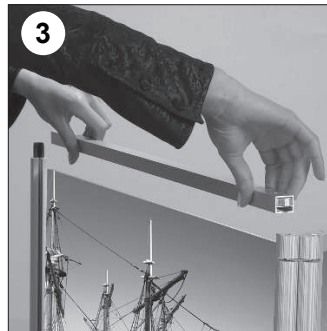
Premier Style Hexagonal Portable Counter

Assembly



1. Position the main counter body in the upright position
2. Fold out the side panels as shown to form a hexagonal shape
3. Place the shelf supports by inserting them into the slots as shown
4. Place the shelf panel onto the shelf supports
5. Finally, position the counter top, ensuring that the rubber stoppers fit into the recesses on the underside of the counter

Assembly of the Printed Panels



1. Release the top profiles by using an allen key to loosen the grub screws as shown
2. Remove the panels as shown.
3. After the application of the prints, slide the panel back into place and replace the top profile
4. Insert the top profile into the channels as shown
5. Use an allen key to tighten the grub screws and fasten the profile in place