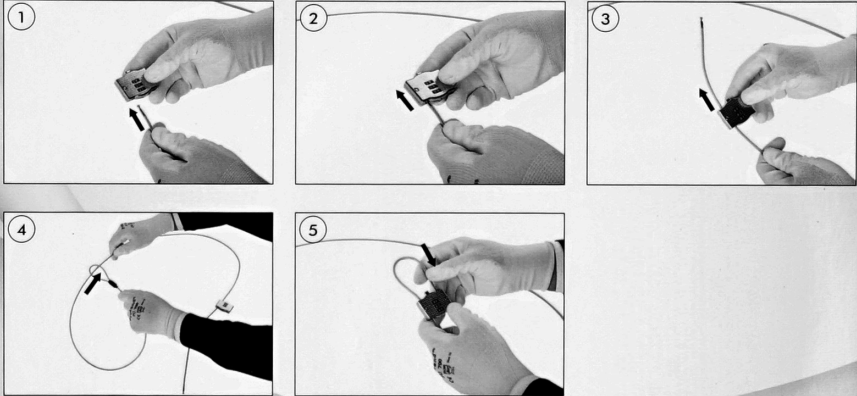
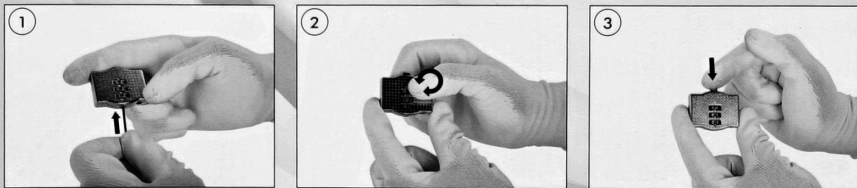


# COMBLK2M - Instructions

## INSTRUCTIONS



## HOW TO SET THE COMBINATION



### **How to set the password combination:**

1. All locks were preset at the factory code 0-0-0.
2. To set the code to your preference, insert the head of cable into the lock hole, simply push the button and hold while turning the wheels to the desired combination.
3. Memorise your own personal combination or record the code at a separate location.