

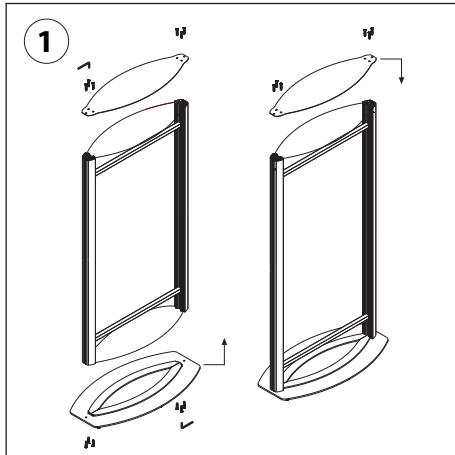
Totem Free Standing Light Boxes

SKU: TOT80170 & TOT60170

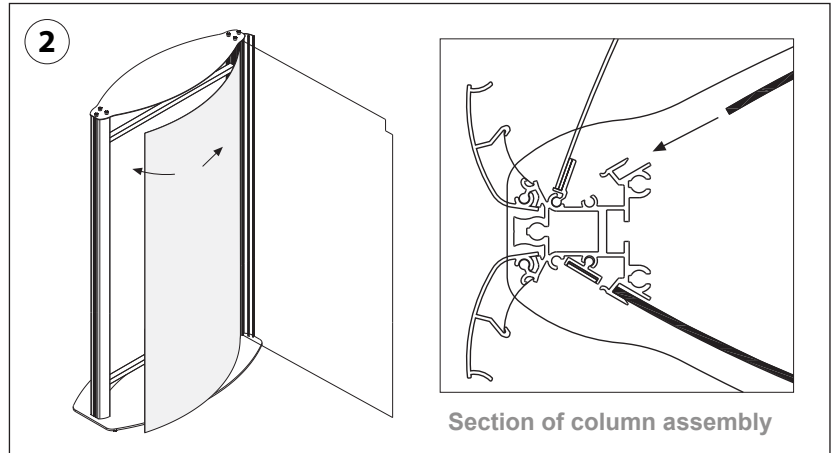
IMPORTANT:

Always ensure power is OFF during assembly & maintenance procedures. These light boxes are intended strictly for INTERIOR use only

Product Assembly Instructions



Screw the bottom and the top plate to the side columns of the light box



Place the full length plastic diffusion panel and clear plastic lens into the channels on the side columns (as shown in the detail drawing) ensuring that the decorative panel is at the bottom of the display

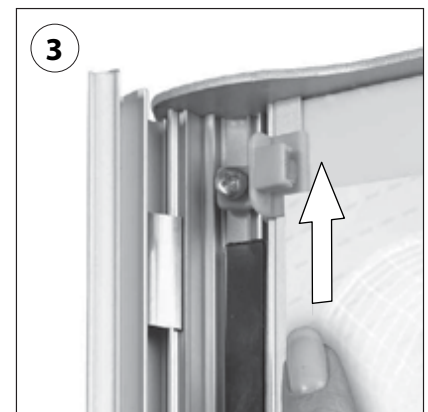
Poster Installation Instructions



Place thumb on the inside of the snap frame profile and open outwards



Peel back clear protective sheet



Fasten the poster by sliding the top corners into the clips as shown



Replace the protective plastic sheet



Close the snap frame profile on each side of the display. Finally, switch on your totem light box and start advertising!

