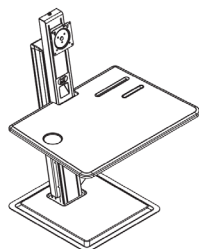


# Standing Desk Mount

## SKU: KS32S80

### INSTRUCTIONS



**Fits Display Size : 17"-32"**  
**Total Load Capacity : 2-9 kg/4.4-19.8 lbs**  
**VESA : 75x75,100x100mm**

Severe personal injury and property damage can result from improper installation or assembly. Read the following warning carefully before beginning.

- Products must be installed by professional or installer.
- If you do not understand the instructions or have any concerns or questions, please contact a qualified local installer.
- Do not install or assemble if the product or hardware is damaged or missing, if you require replacement parts, please contact your local distributor for assistance.
- This product fits most 17"-32" LCD/LED monitor, maximum weight of LCD /LED monitor: 4.4-19.8lbs(2-9kg).
- Installer-friendly and straight forward.
- For safe installation, the desk you are mounting to must support minimum 3 times the weight of the total load (the mount, the monitor and all accessories weight).
- Do not use this product for other than the original designed.
- This product contain moving parts, please use with caution.
- When installing monitor, please do not damage electrical wiring or power source.
- Installation and routing of monitor cables on the monitor bracket must comply with electro-technical regulations.
- Importantly, mains- and data-cables must be secured against twisting and squeezing or shearing.
- The manufacturer will bear no responsibility to the desk of mounting, or incidental or consequential damages arising thereof.
- The manufacturer disclaims any liability for the modifications, improper installation, or installation over the specified weight range. The manufacturer will not be liable for any damages arising out of the use of, or inability to use, the product.
- This product is designed for indoor use only, use of this product outdoor could lead to product failer and severe personal injury.

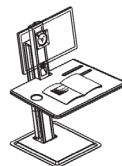
### Symbols and meanings

	Tightening Direction		Loosening Direction	+	Torque increased
	Loosening Direction		Tightening Direction	-	Torque reduced
	Phillips Screwdriver		By Hand		
	Open-End Wrench		Hex Wrench		
	Adjustment		Pencil		
OPT	Optional	NOTE	Reminder		
	Warning		Hand Drill		
	Remove		Star Wrench		

### Working Load Capacity Table

\*WARNING\*- "Risk of Injury - maximum loading shall be loaded according to Loading Capacity Table" for Face Plate and Tray.

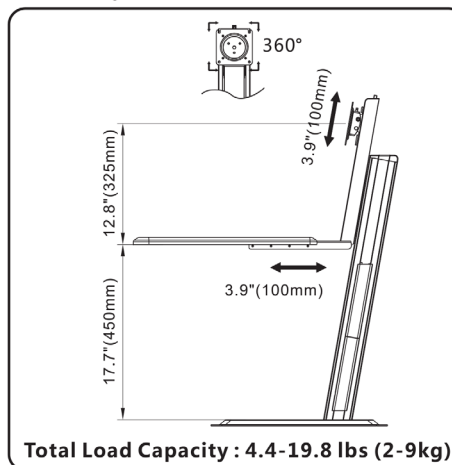
NO.	Face Plate Loading(kg/Lbs)	Tray Loading (kg/Lbs)	Total
1	9/19.8	0/0	
2	8/17.6	1/2.2	
3	7/15.4	2/4.4	
4	6/13.2	3/6.6	
5	5/11.0	4/8.8	
6	4/8.8	5/11.0	
7	3/6.6	6/13.2	
8	2/4.4	7/15.4	



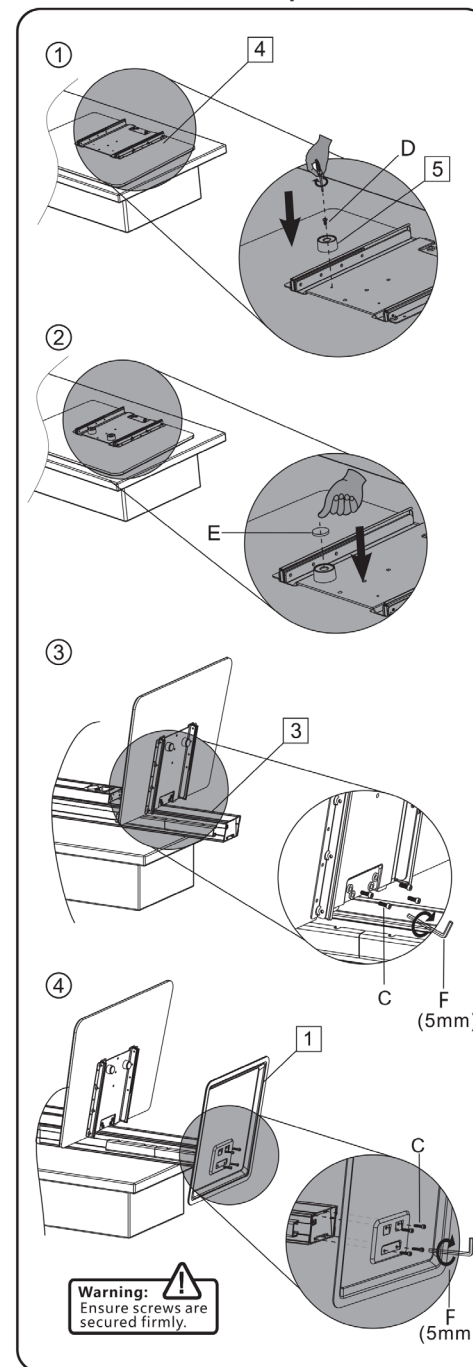
### Parts list

1	2
3	4
5	6
7	
2x	1x
8x	
A	B
4x	4x
M4x12	M5x12
C	D
4x	4x
M6x30	M6x12
E	F
2x	1x
M5x6	4mm
	5mm

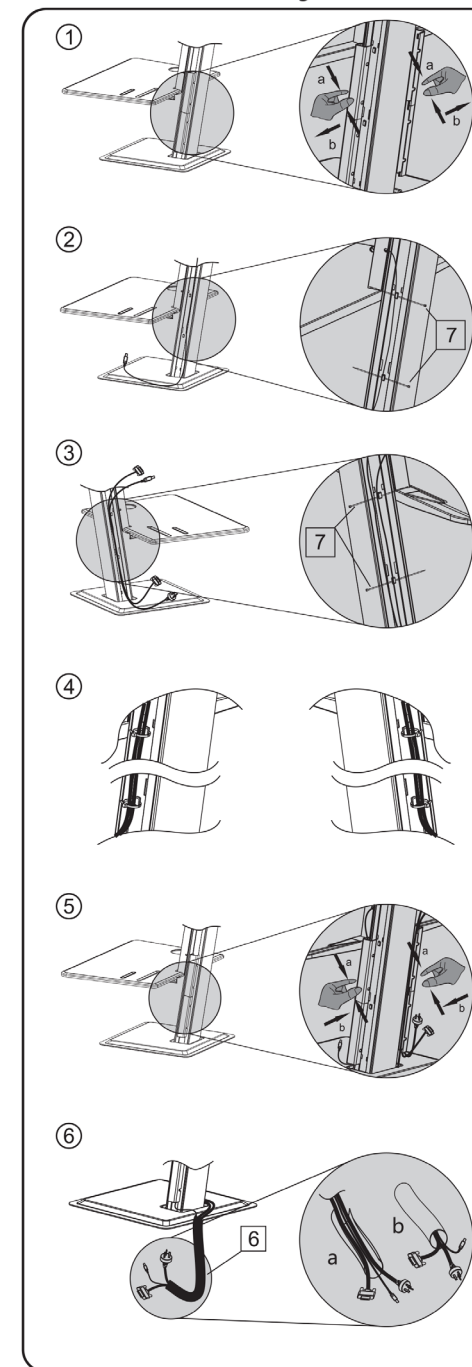
### A. Full adjustment after installation



### B.Installation (2men required)

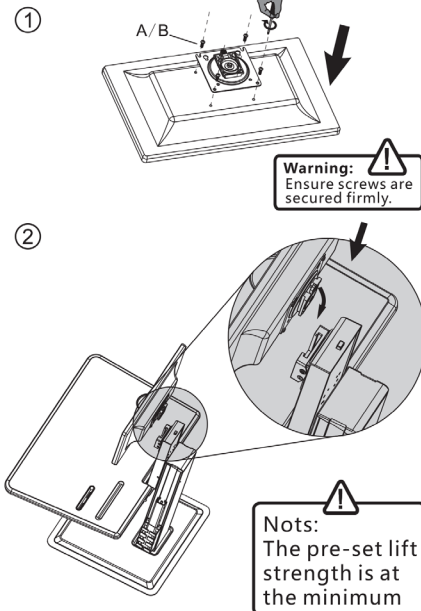


### C. Cable and Lines management

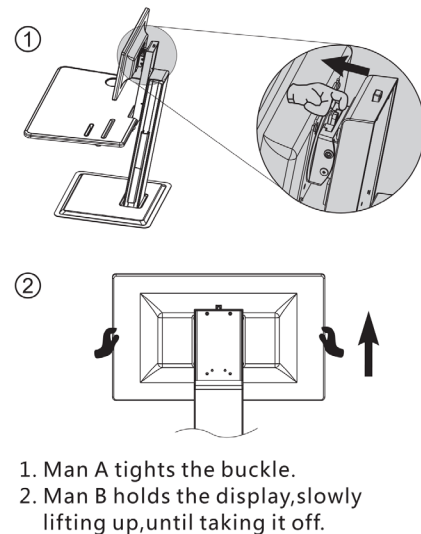


## D. Display Installation (2men required)

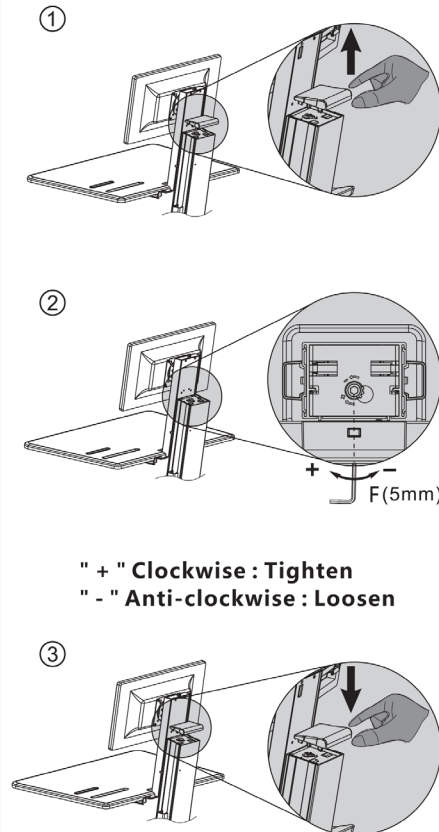
### Installation method:



### Uninstallation method:



## E. Life strength adjustment Direction " + " increase. " - " decrease

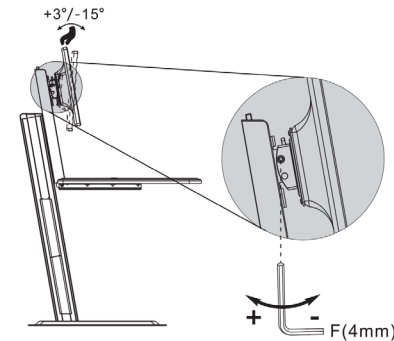


" + " Clockwise : Tighten  
" - " Anti-clockwise : Loosen

**! Ensure display is installed and load capacity within 2 - 9 kg/4.4-19.8lbs**

- A If worksurface with equipment can be hovered at any height along the slide, no adjustment needed.
- B If worksurface with equipment can not be stopped at any height along the slide. then grasped and pull open cover located on top of the slider (fig #1)
- B.1 If sliding up freely, then use 5mm Allen key to wind set screw'- anti-clockwise to reduce lifting force until it stays at any point (Fig #2). Attach cover (Fig #3).
- B.2 If sliding down freely, then use 5mm Allen key to wind clockwise to increase lifting force until it stays at any point (Fig #2) Attach cover (Fig #3).

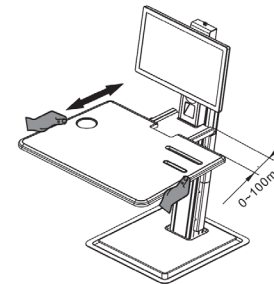
## F. Tilt angles adjustment (2 men required)



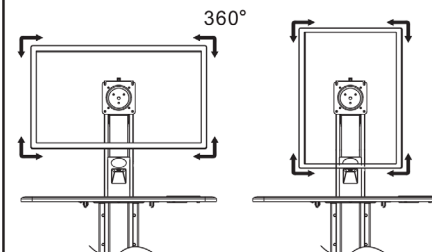
" + " Clockwise : Tighten  
" - " Anti-clockwise : Loosen

- #1 : If display can be tilted and stay, no adjustment needed.
- #2 : If display can be tilted but slide down, tighten screw according to Fig above until display stay as it is.

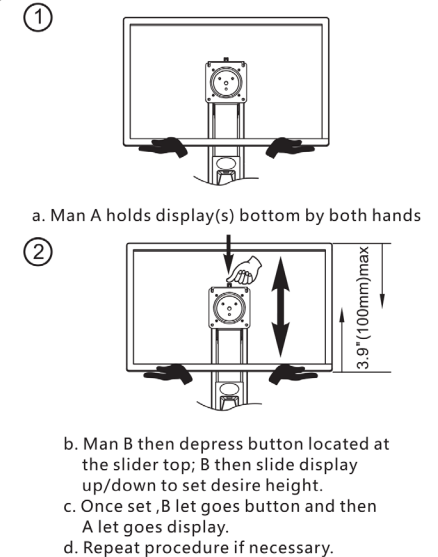
## G. Tray Extension



## H. Display Rotation



## I. Display Height Adjustment (2 men required)



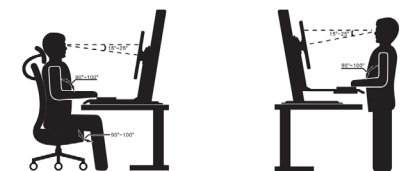
### Lift strength adjustment after full installation



1. Ensure display has been installed.
2. Ensure load capacity within 2-9kg/4.4-19.8lbs.
3. Ensure all screws are secured firmly.

+ Increase strength direction  
- Decrease strength direction

### Ergoconcepts



[www.slimlinewarehouse.com.au](http://www.slimlinewarehouse.com.au)