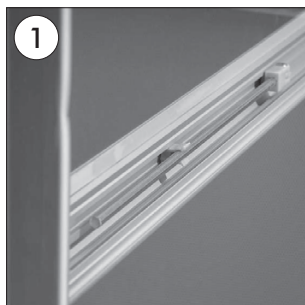


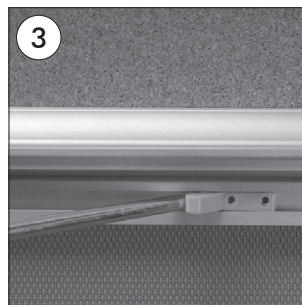
DY03CB4A4, DY03CB6A4, DY03CB8A4 & DY03CB12A4



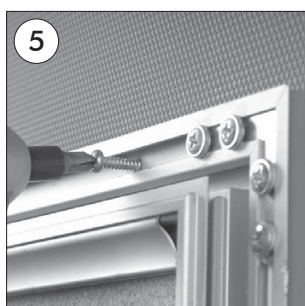
- Open the cover door.



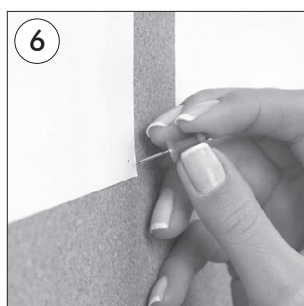
- Take out the metal bars from the slots inside the cover. Fix the cover in open position by leaning the ends of the metal bars to the plastic holder in the bottom and upper profiles of the frame.



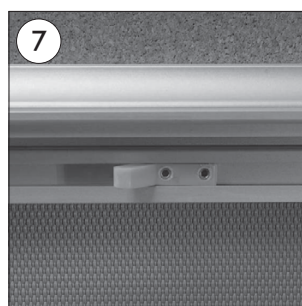
- Remove the two screw/brackets from the centre of the canal.
**These are only used if the board is mounted to a pole.*



- Fix the frame to the wall through the four holes in the canal nearest to the corners.



- Attach the documents to the cork base with pushpins.



- Mount the metal bars to the slots, inside of the cover, after taking them out from the plastic holders. Lock the cover after closing.

