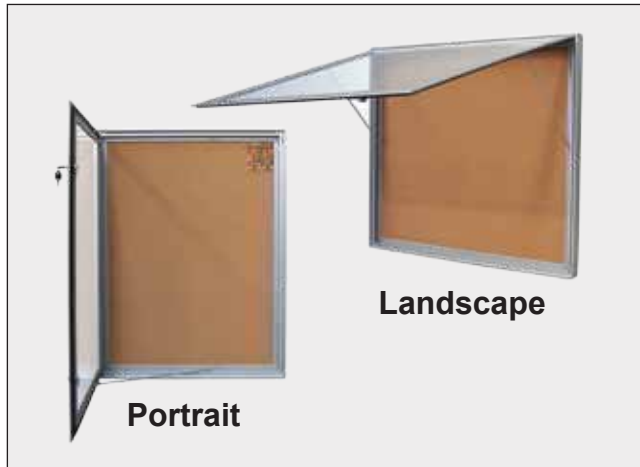


Notice Board Installation Instructions

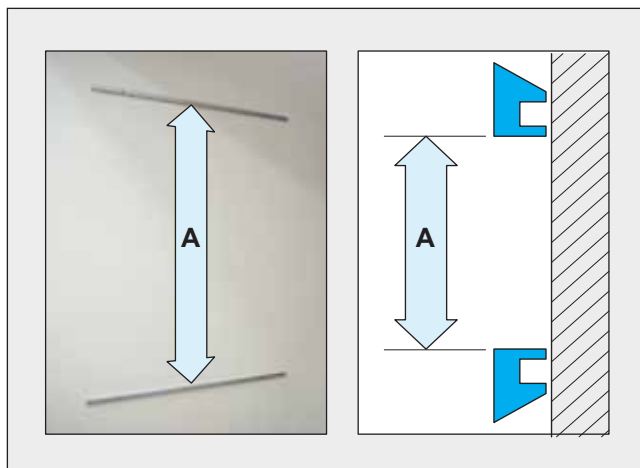
Models: DY044A4, DY04LED4A4, DY046A4, DY04LED6A4, DY049A4, DY04LED9A4, DY0412A4, DY041500



Distance Between Rails (A)		
Model	Portrait	Landscape
DY044A4	715 mm	545 mm
DY04LED4A4	715 mm	Portrait Recommended
DY046A4	775 mm	715 mm
DY04LED6A4	775 mm	Portrait Recommended
DY049A4	1035 mm	775 mm
DY04LED9A4	Landscape Recommended	775 mm
DY0412A4	1035 mm	1010 mm
DY041500	1465 mm	1005 mm

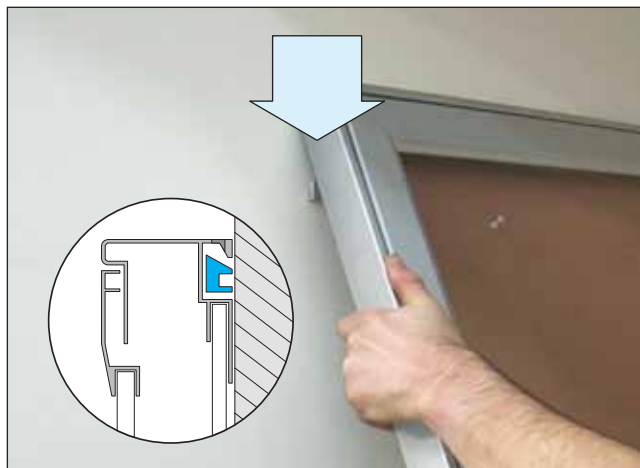
1. Decide whether you will be using your notice board in portrait or landscape orientation

2. Use the table above to identify the correct distance between the two hanging rails for the model of notice board you have purchased and the orientation that you prefer



3. Mark the wall with the desired position of the hanging rails. All measurements should be between the upper and lower edges of the rails. The rails must be oriented as illustrated

4. Drill holes in the wall as marked. Insert wall anchors and fasten the hanging rails to the wall with the screws provided



5. Slide your notice board down onto the upper hanging rail ensuring that the notice board is centred and the hanging rail is sitting securely in the corresponding slot as illustrated

6. Using the allen key provided tighten the grub screws on the top and bottom edges of the notice board. This completes installation of your Slimline Warehouse notice board