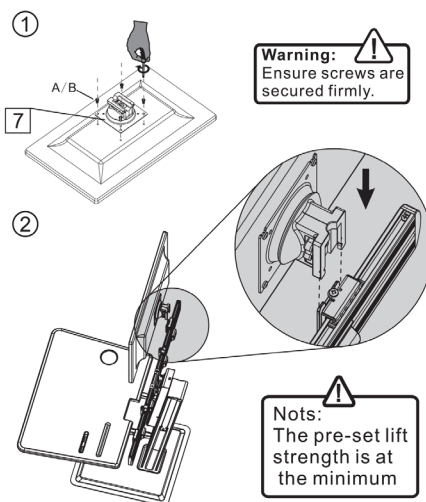


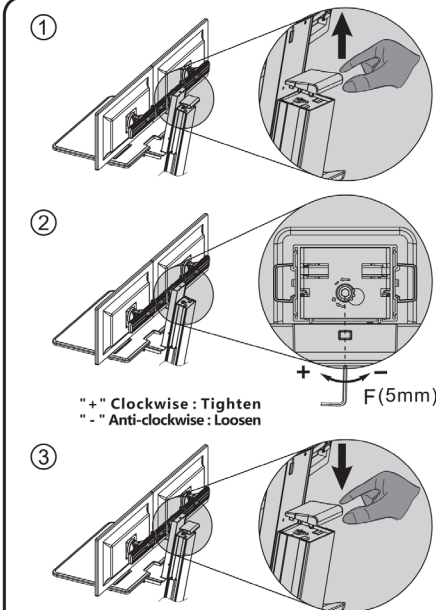
D. Display Installation (2 men required)



Remove Display:

1. Man A tightens the buckle.
2. Man B holds the display, slowly lifting up, until taking it off.

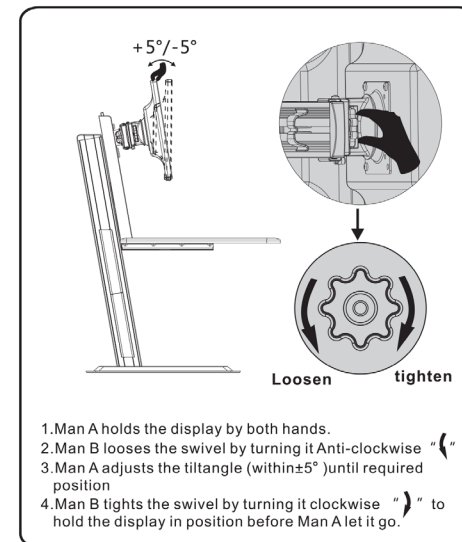
E. Lift strength adjustment Direction "+" increase. "-" decrease



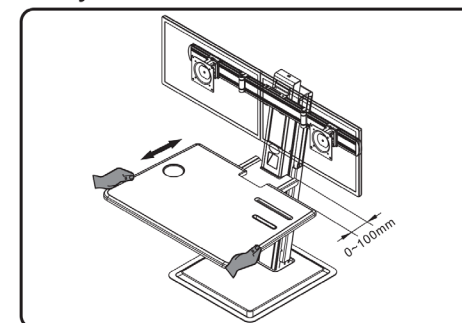
⚠ Ensure display is installed and load capacity within 2 - 9 kg/4.4-19.8lbs

- A** If worksurface with equipment can be hovered at any height along the slide, no adjustment needed.
- B** If worksurface with equipment can not be stopped at any height along the slide, then grasped and pull open cover located on top of the slider (fig #1).
- B.1** If sliding up freely, then use 5mm Allen key to wind set screw - anti-clockwise to reduce lifting force until it stays at any point (Fig #2). Attach cover (Fig #3).
- B.2** If sliding down freely, then use 5mm Allen key to wind clockwise to increase lifting force until it stays at any point (Fig #2) Attach cover (Fig #3).

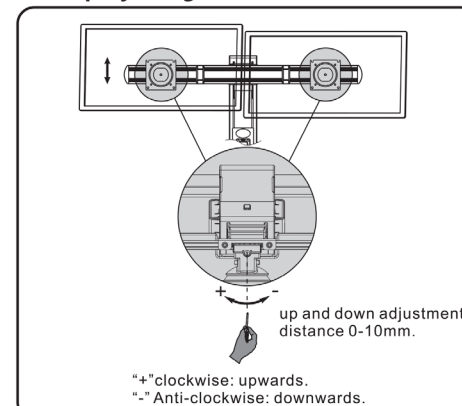
F. Tilt Angles Adjustment (2men required)



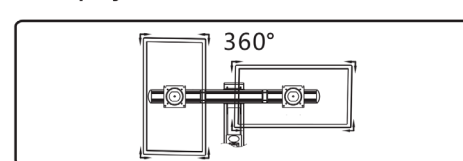
G. Tray Extension



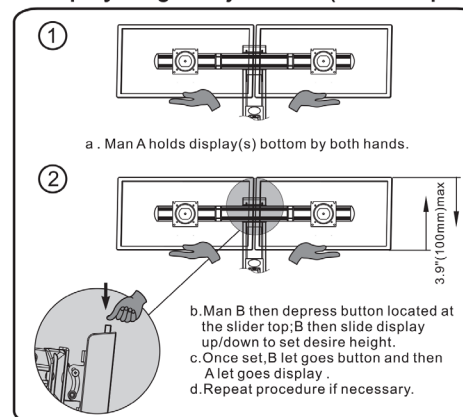
H. Displays Alignment



I. Display Rotation



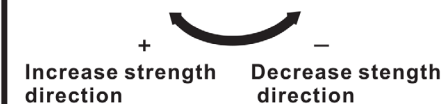
J. Display Height Adjustment (2men required)



Lift strength adjustment after full installation



1. Ensure display has been installed.
2. Ensure load capacity within 2-9kg/4.4-19.8lbs.
3. Ensure all screws are secured firmly.



Ergoconcepts



www.slimlinewarehouse.com.au