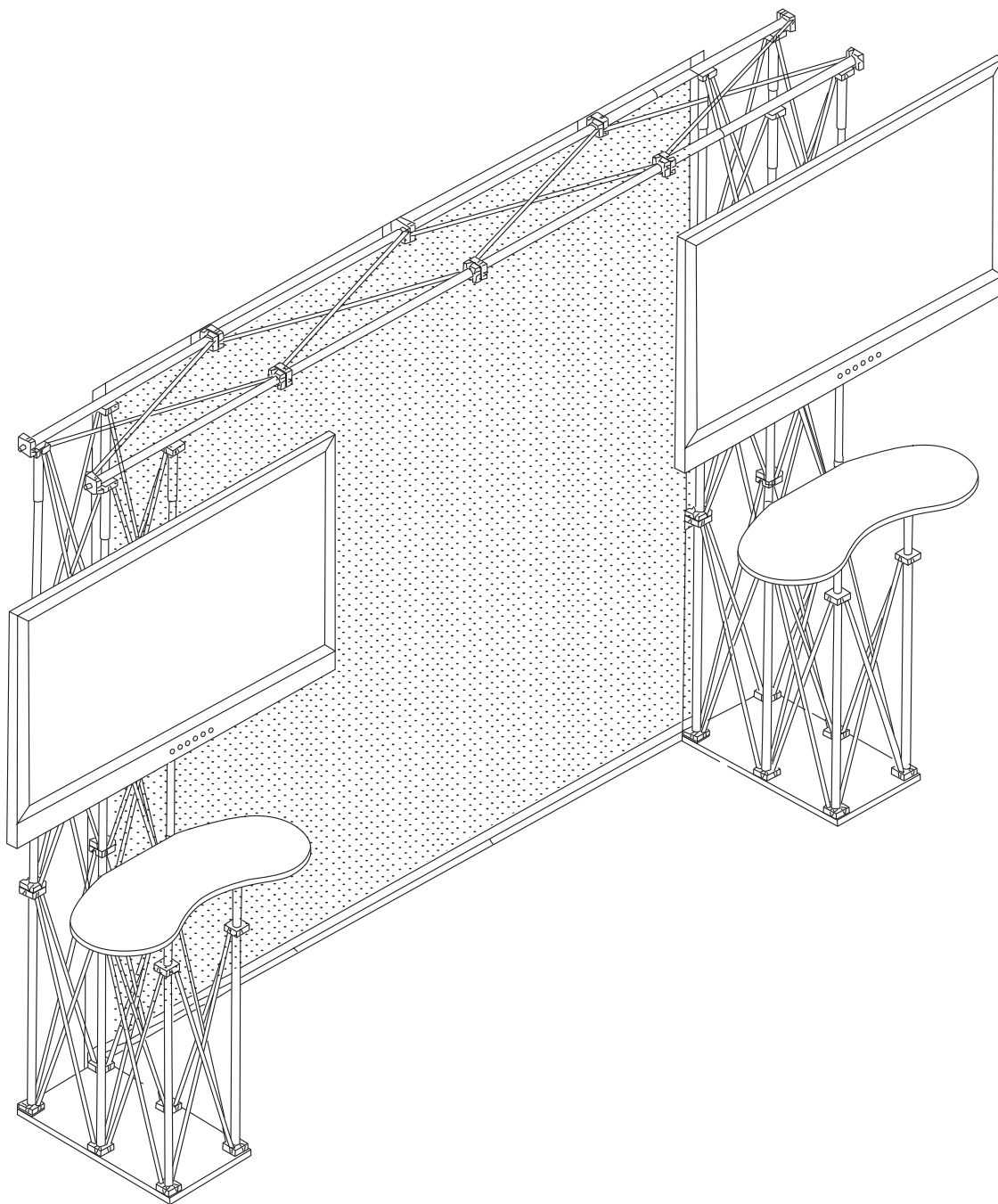
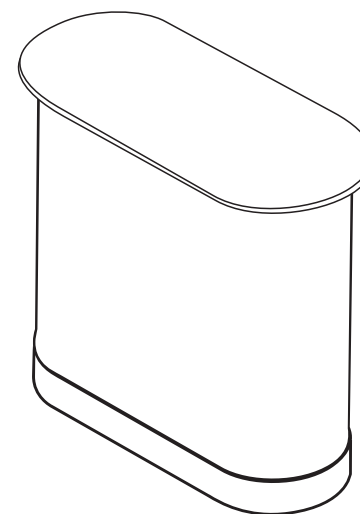


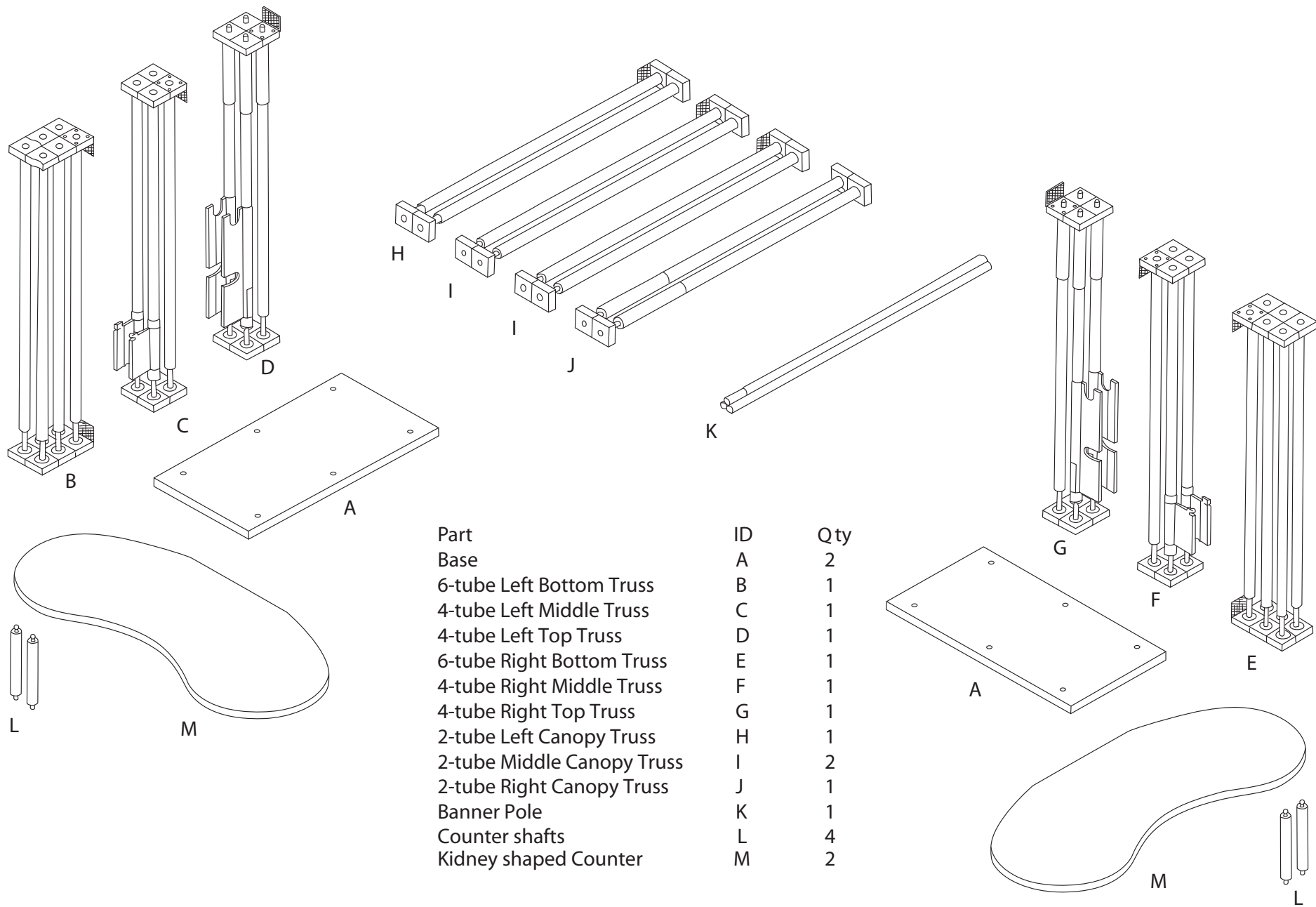
TVONDUALSL - Assembly Instructions



Thank you for purchasing our Display Center. This folding truss TV stand and display center is designed to accomodate two flat panel TVs from 32" up to 65" screen (diagonal) and weighing up to 36kg per TV. Assembly is easy with no additional tools required.



Assembly Instructions



| Part | ID | Qty |
|----------------------------|----|-----|
| Base | A | 2 |
| 6-tube Left Bottom Truss | B | 1 |
| 4-tube Left Middle Truss | C | 1 |
| 4-tube Left Top Truss | D | 1 |
| 6-tube Right Bottom Truss | E | 1 |
| 4-tube Right Middle Truss | F | 1 |
| 4-tube Right Top Truss | G | 1 |
| 2-tube Left Canopy Truss | H | 1 |
| 2-tube Middle Canopy Truss | I | 2 |
| 2-tube Right Canopy Truss | J | 1 |
| Banner Pole | K | 1 |
| Counter shafts | L | 4 |
| Kidney shaped Counter | M | 2 |

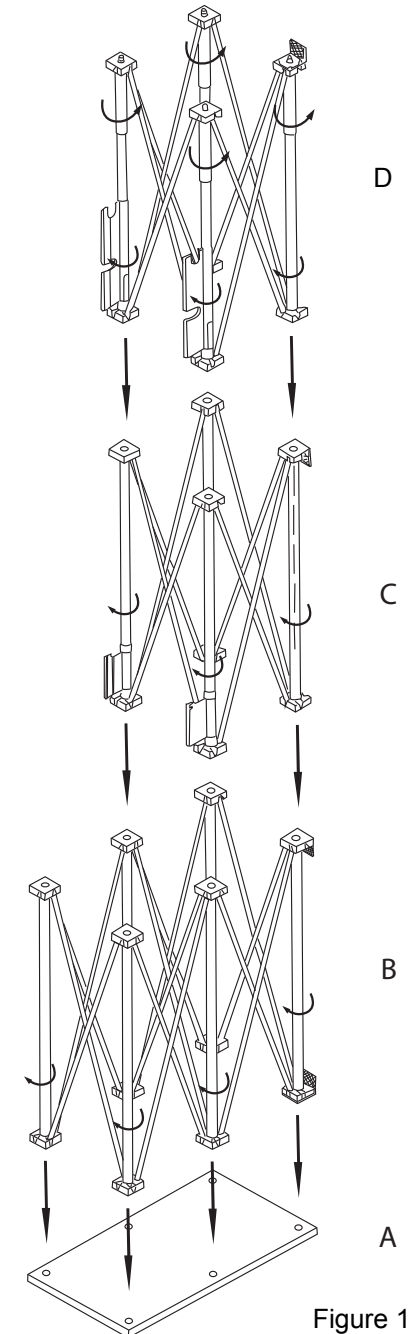
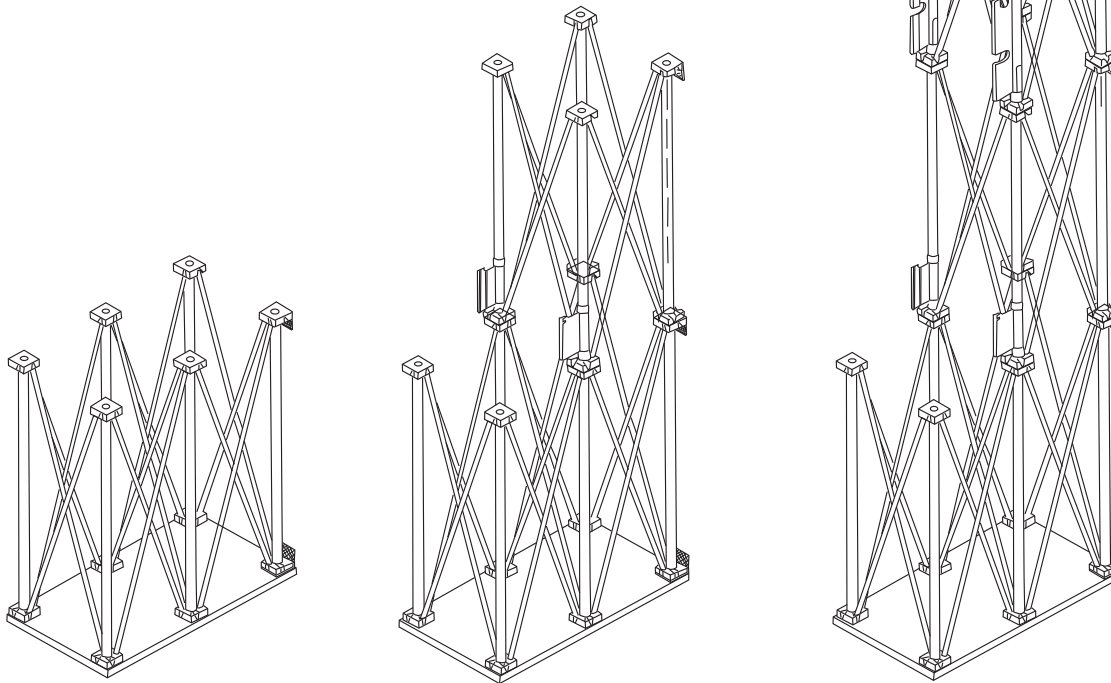
Assembly Instructions

Step 1

Place Base (A) on the floor. Figure 1.

Expand Truss (B,C & D).

Twist Truss (B) uprights incrementally clock-wise to attach to Base (A). Repeat with Truss (C & D).



Assembly Instructions

Step 2

Place Base (A) on the floor. Figure 2.

Expand Truss (B,C & D).

Twist Truss (E) uprights incrementally clock-wise to attach to Base (A).

Repeat with Truss (F & G).

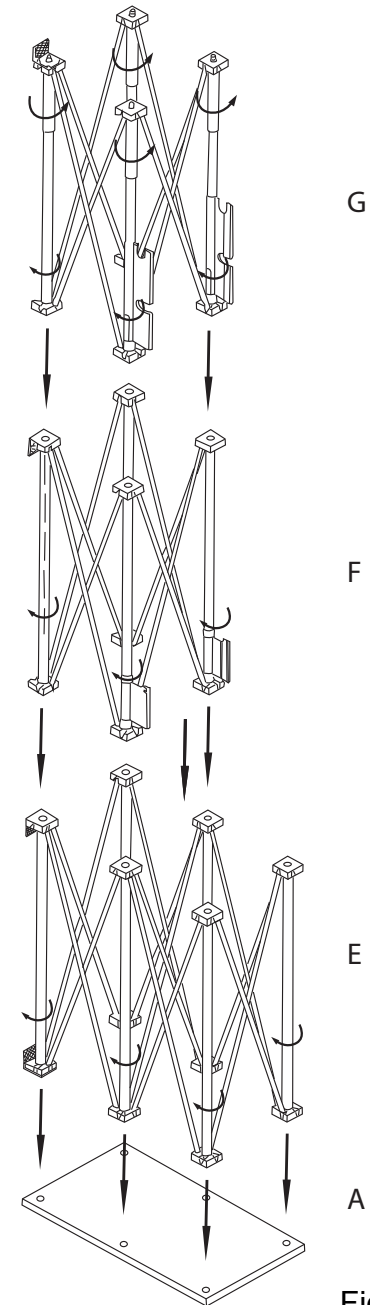
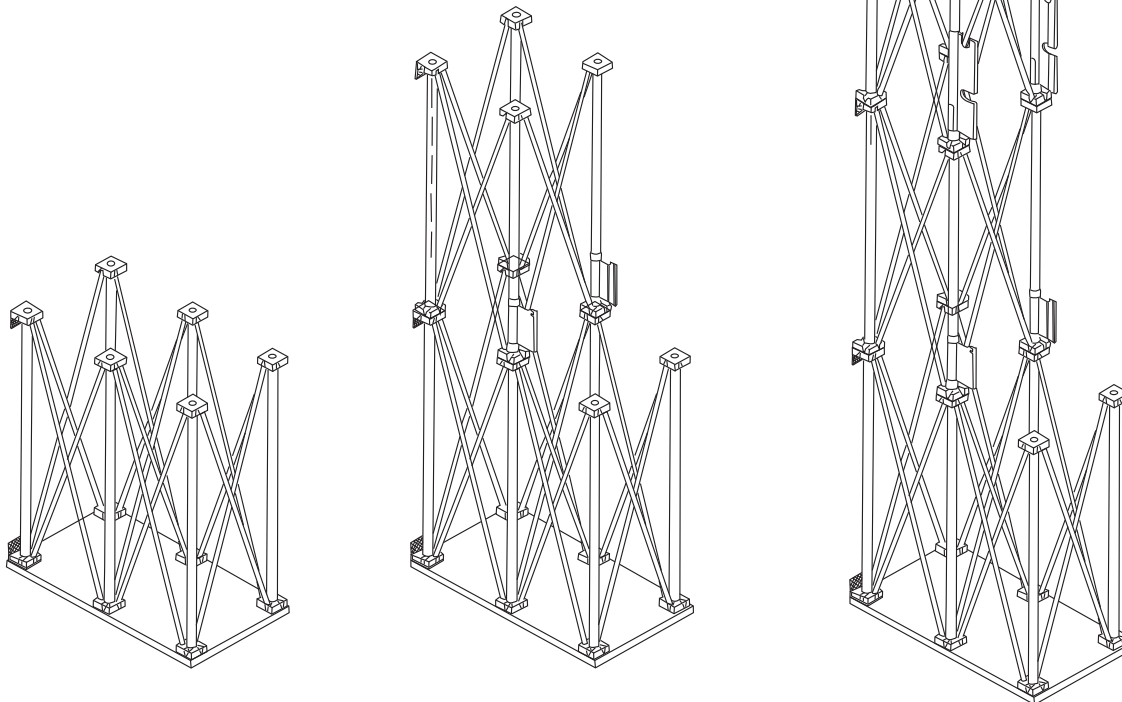


Figure 2

Assembly Instructions

Step 3

Expand each Canopy Truss (H , I, &J), Twist the Truss pole uprights incrementally clock-wise to attach. Figure 3

Assembly all Canopy Truss sections before securing to left & right truss uprights. Figure 4, Page 6.

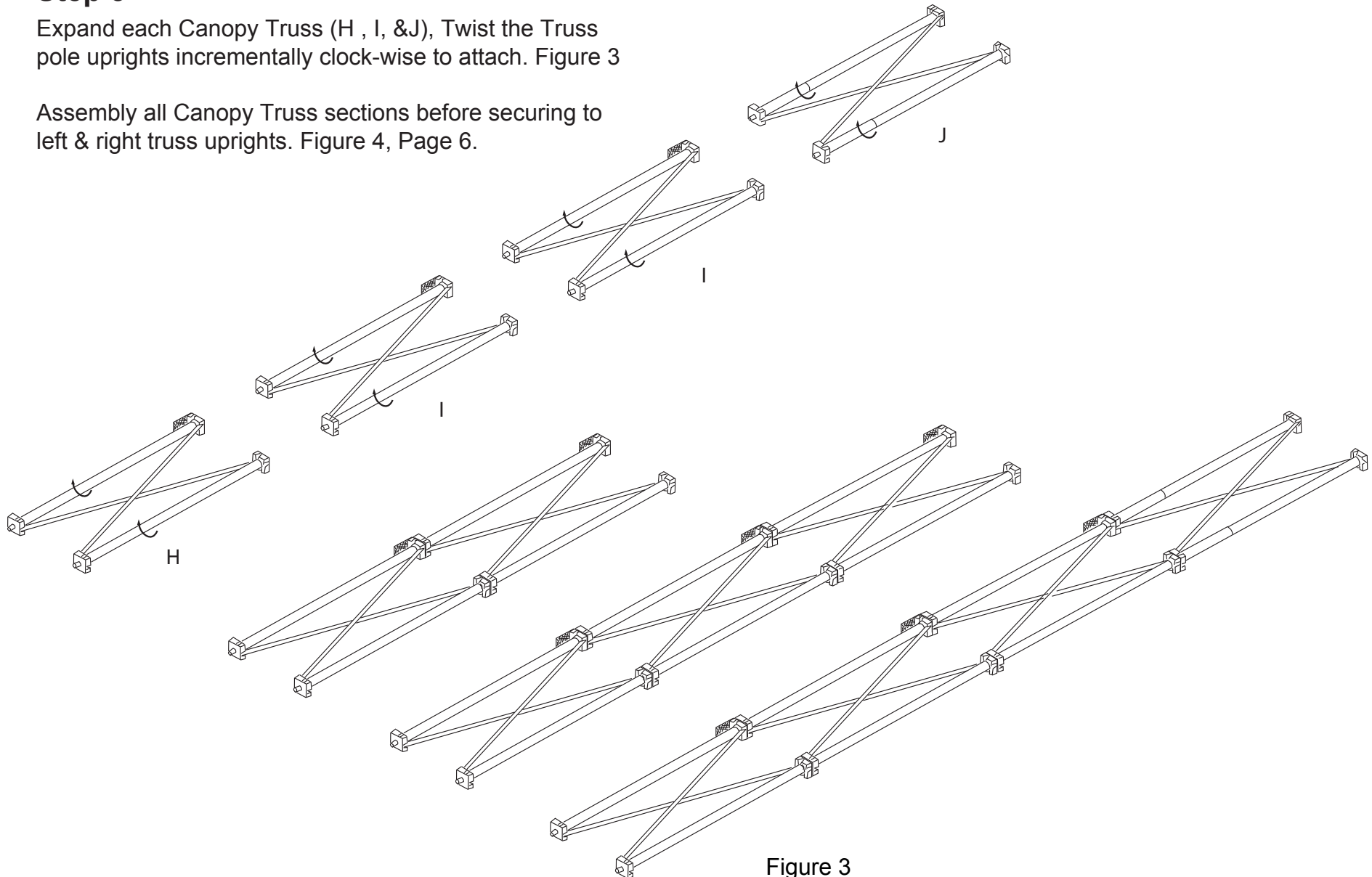


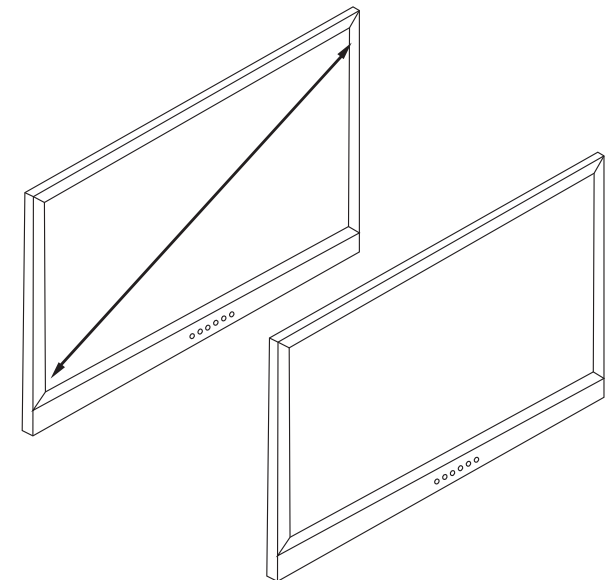
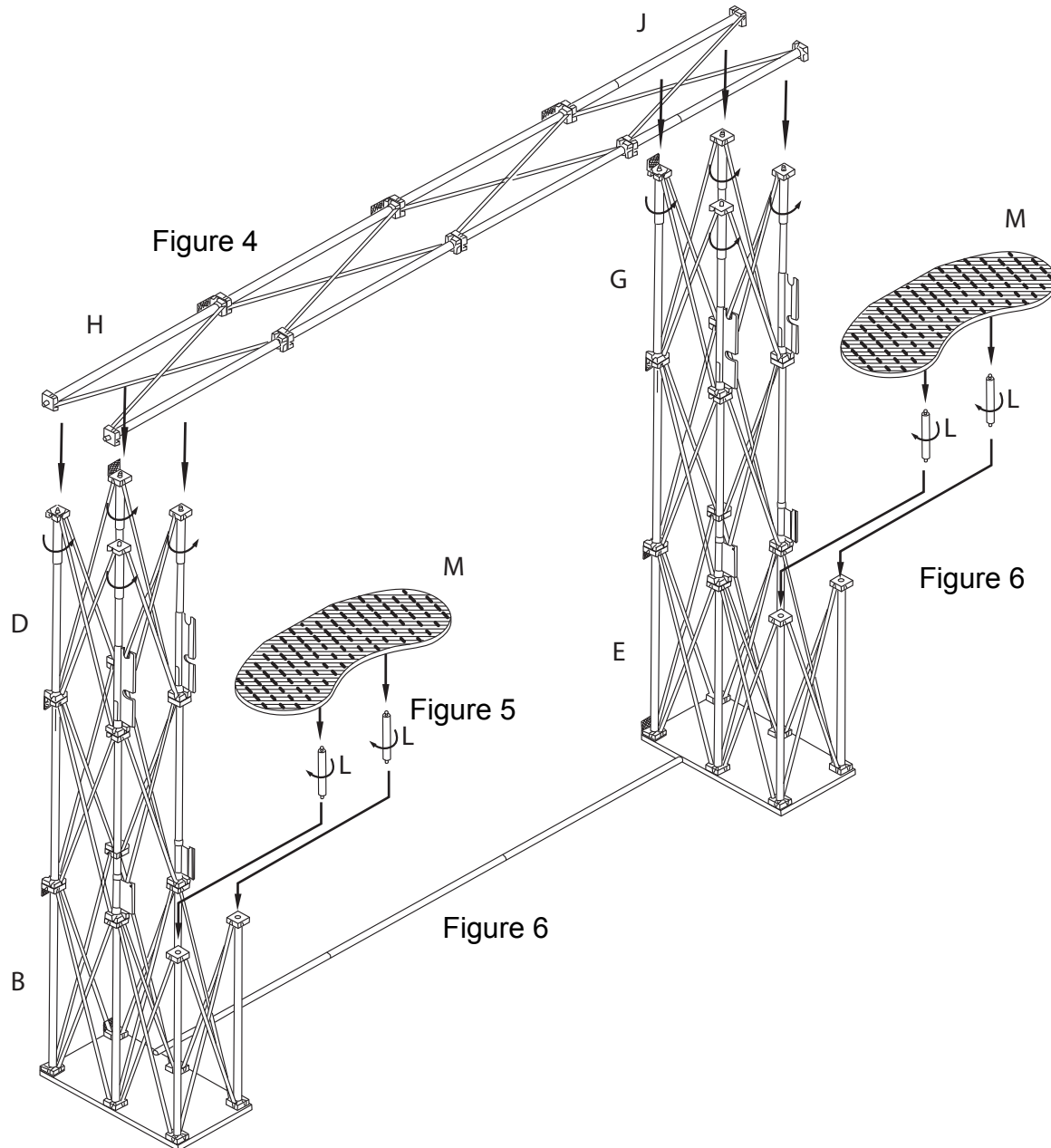
Figure 3

Assembly Instructions

Step 4

- a. Place Canopy on top of left & right Truss uprights. Screw together at joints as the picture shown twisting counter clock-wise.
- b. Screw the Counter Shafts (L) into the left & right bottom truss (B & E). Place the Counters (M) on Truss (B&E) Risers at front and back. Figures 5 & 6.
- d. Place TV bracket on monitors and hang on brackets on Top Truss (D & G).

Note: The banner pole (K) may be inserted into the loop at the bottom of the banner to stiffen bottom edge. Figure 6.



Assembly Instructions

