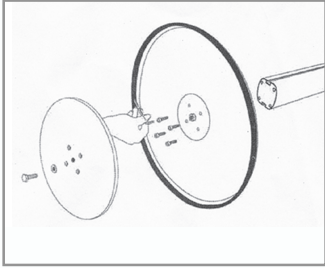
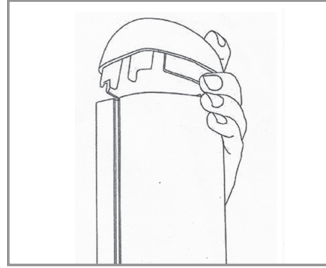


Sages iPad Stands - Instructions

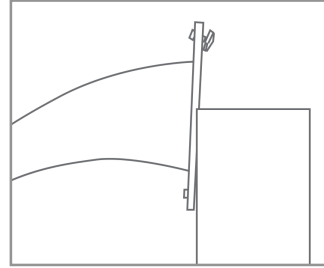
SKU: SGA4SLVSS, SGA4BKSS, SGA4SVDS, SGA4BLKDS



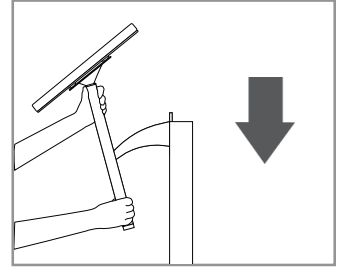
1. Connect the pole, base and weight as shown.



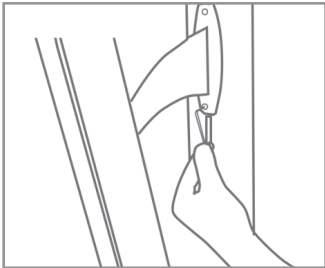
2. Remove the pole cap.



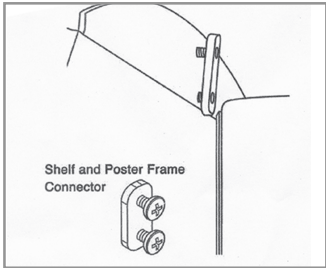
3. Assemble the iPad holder and loosely attach the included connector to the back of the plate to slide down the channel.



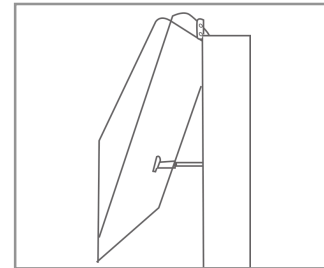
4. Slide the iPad holder down the pole into the desired position.



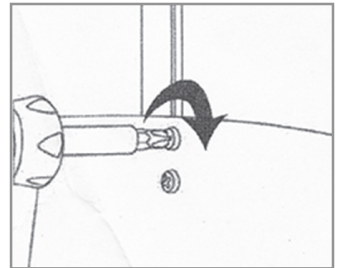
5. Using the allen key, tighten the screw to the pole.



6. To attach the brochure holder, loosely attach the included connector to the back side of the brochure holder.



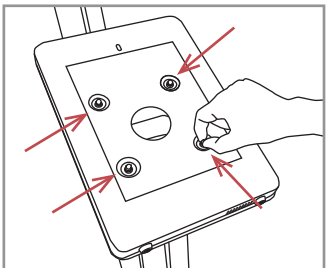
7. Slide the support arm (attached to the shelf) and the connector plate into the pole channel.



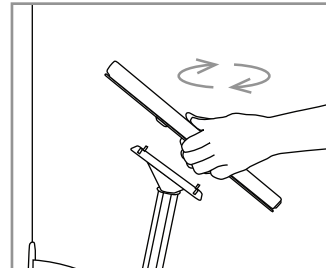
8. Tighten the connector screws at the desired height on the pole.



* iPad enclosure can be installed both portrait and landscape orientation



1. Before inserting the iPad, undo the 4 dome nuts on the inside of the iPad enclosure



2. Lifting the iPad holder from the bracket and change the orientation

