

Petite Promo Stand

SKU: PPC3100

Components:

A	Carry Bag
B	Body Panel
C	Bottom Tray
D	Shelf
E	Upper Tray
F	Header Card
G	Header Tubes

Instructions:



Take the Body Panel (B) and bend it to fit to the inside of the lip on the Bottom Tray (C)



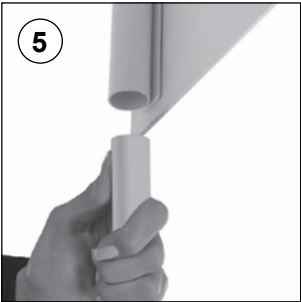
Fit the Shelf (D) in place by inserting the tongues into the cut outs in the Body Panel (B) as illustrated



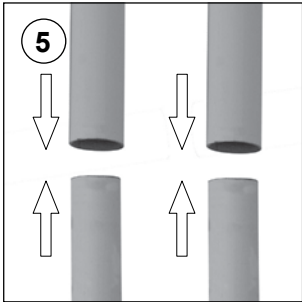
Fit the Upper Tray (E) onto the top edge of the Body Panel (B) and push down until it locks into place



Take two of the Header Tubes (G) and pass the untapered ends through the holes in the Upper Tray (E) and position them onto the fastening points on the Shelf (D)



Take the remaining two Header Tubes (G) and insert the tapered ends into the tubes on the Header Card (F)



Join the Header Tubes (G) on the Header Card (F) to those protruding from the counter assembly. Assembly is complete!



© All rights reserved. All pictures, figures and writings are secured internationally by copy-right law. Infringements will be sued by civil and legal law