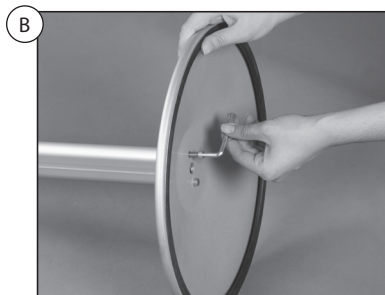
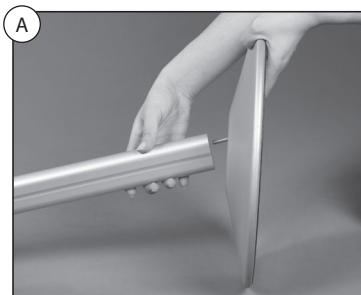
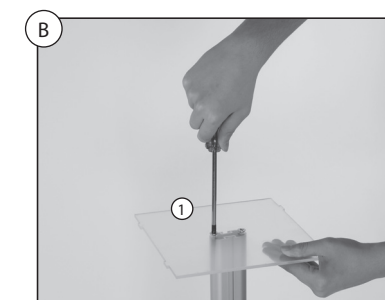


FREE STANDING PUZZLE TUMBLE BOX LOGO

•BASE



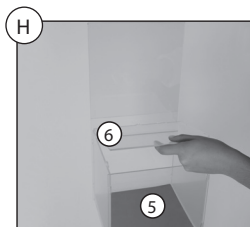
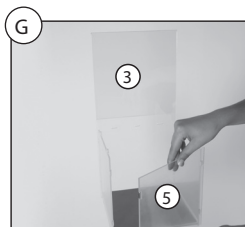
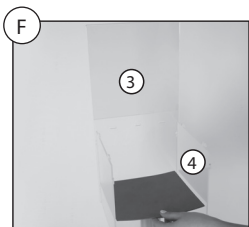
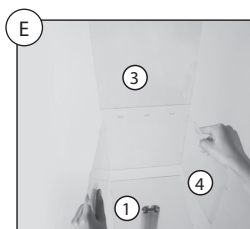
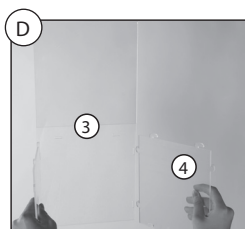
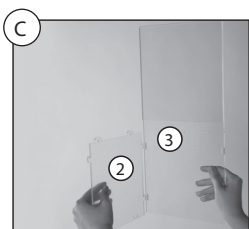
•TUMBLE BOX



- Peel the film off each piece

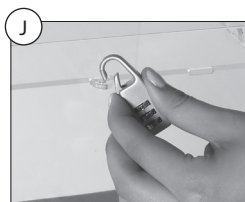
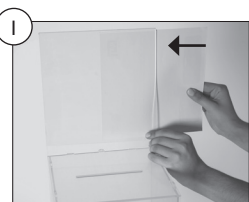
- Screw piece no:1 to pole.

- Follow the numbers indicated on the on each peice to make the box. Simply insert the pieces on the engraved holes.

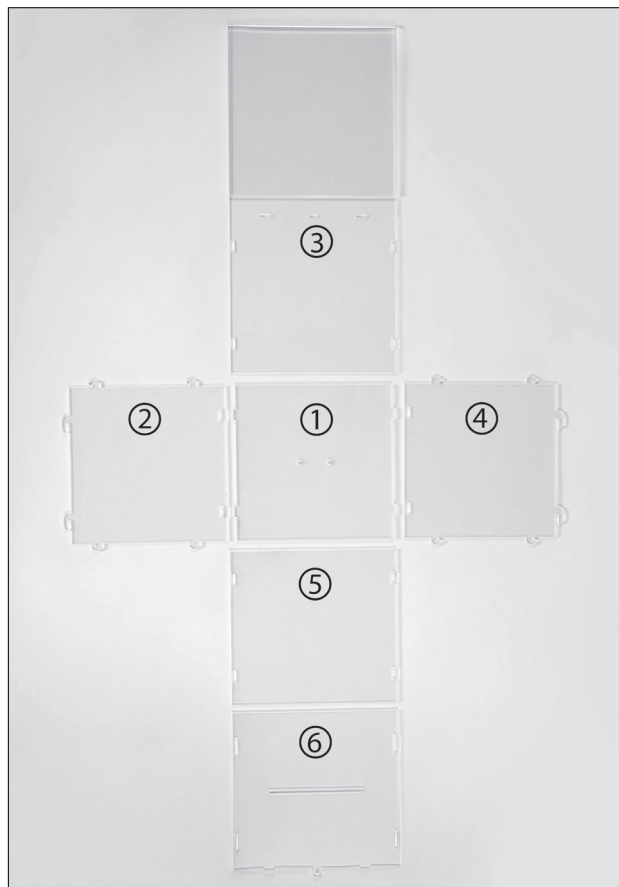


- Place fabric on the base

- Close the box with piece no:6.



- Insert the combination lock into hole at the back, to keep the box stable.



•LOCK

- You can change the combination by pushing the button shown in the picture by arrow.

