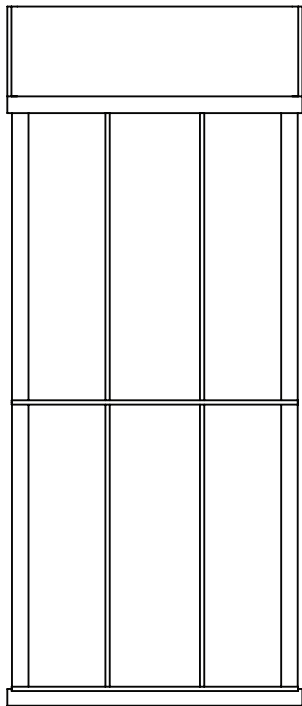
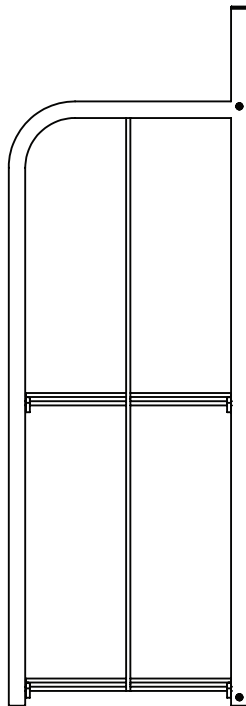


NEWCTX Newspaper Stand

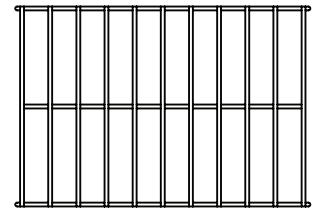
Parts List



(1) Back Frame x1



(2) Side Frame x2



(3) Wire Shelf x2



(4) Screw x4

ASSEMBLY INSTRUCTIONS

1. Ensure all components are present prior to installation.
2. Screw Side Frames (2) to the Back Frame (1).
3. Place two shelves (3) on the support wire of side (2)

