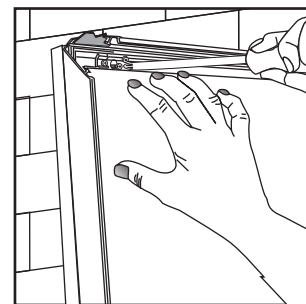
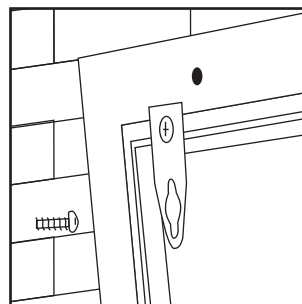
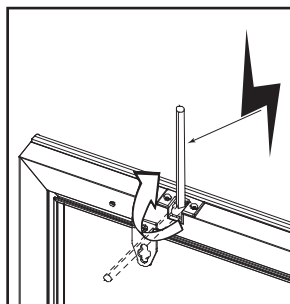
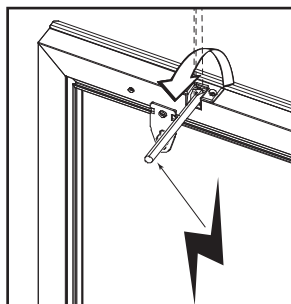
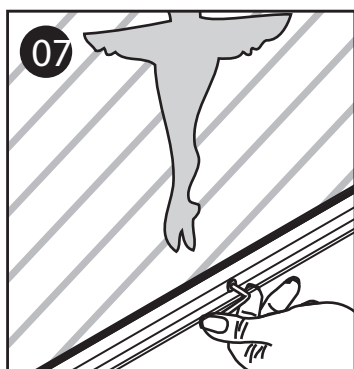
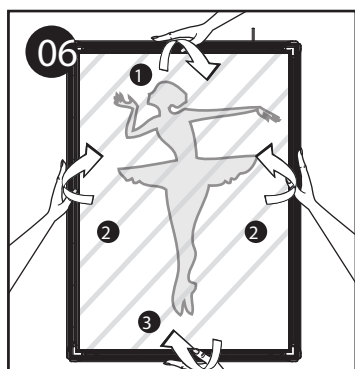
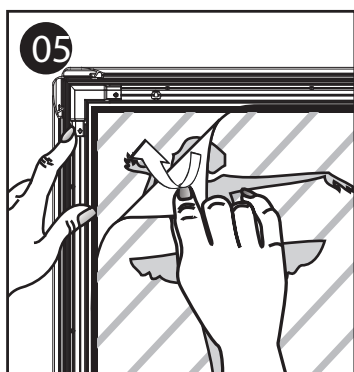
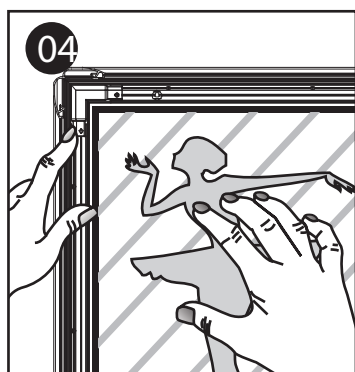
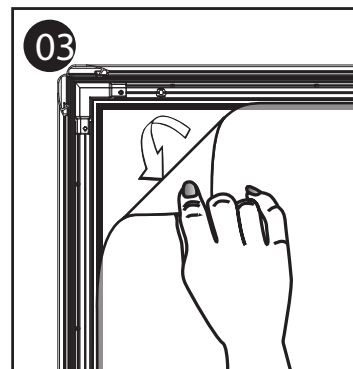
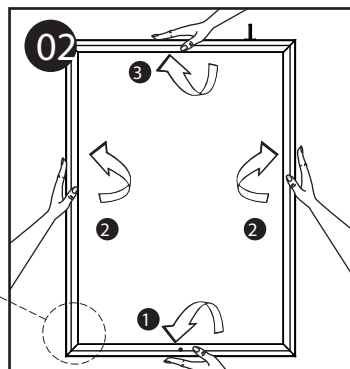
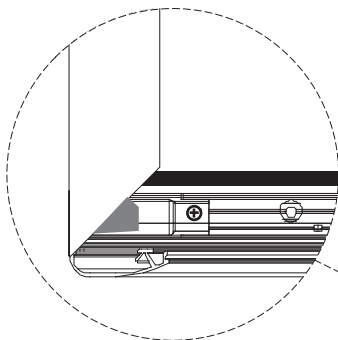
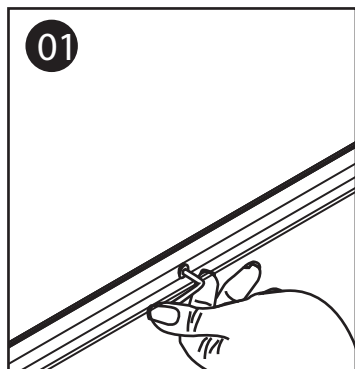


WEATHERPROOF LOCKABLE LEDBOX 35mm



•Please inform the order number on the product or on the carton (e.g. 1/110001394-460) to the place that you have made the purchase if any problem with the product occurs.

•All rights reserved. All pictures, figures and writings are secured internationally by copy-right law. Infringements will be sued by civil and legal law.



1007613



CAUTION!

- EN
- 1- Do not step on the light panel nor place the heavy object on the light panel.
 - 2- Do not pull the cable with excessive force.
 - 3- Use correct capacity and voltage of D.C. power supply.
Failure to observe this instruction could result in breakdown.
 - 4- Do not touch the light panel or electrical devices with wet hand.
Failure to observe this instruction could result in electrical shocks and severe injuries.
 - 5- Acceptable ambient temperature is min. -15°C – max. 45°C. Failure to observe this instruction could result in shorten the life time and degradation of brightness of LED light source.
 - 6- Do not touch the LED Drivers when its is in operation or just after turning the unit off due to High Temperature.

